

WEKEM®

Professional
Industrial products



Technical sprays



Canisters & loose items



Assembly pastes



Lubricants



Superglue



Technical accessories



WK-Flon



2K adhesives



Adhesives and sealants



Silicone



Loxeal



Innovative products, manageable ranges, high reliability, timely and punctual production processes, tailor-made solutions – this all comes naturally to us.



Quality is the foundation of any modern development. Modern materials are required in our rapidly-growing and highly developed industrial culture. We step up to this challenge!



all-automatic labelling

Our chemical and technical products are constantly evolving, and are subject to strict quality standards. Formulas are continuously optimised, taking into account components which are safe for both human and environmental health.

Just like our satisfied global client base, you can benefit from our experience.

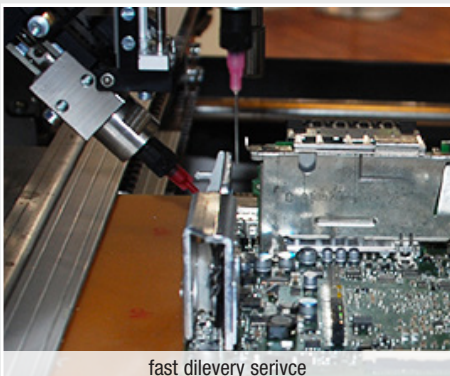


visual final check

WEKEM®

Your specialist partner for

- professional industrial products
- technical aerosols
- Maintenance and repair
- Cleaning
- Assembly paste
- Adhesives and sealants
- Accessories



fast delivery service

Market-oriented solutions and high reliability form the basis of a cooperative partnership.

WEKEM

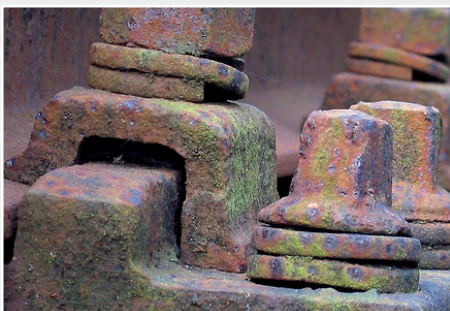
Aerosols

Innovative technical
sprays for use in
industry and trade



AEROSOLS

WS 36 RUST REMOVER



WS 36 quickly and easily solves seized-up and rusted connections. Universally applicable to screws and threads, bolts, joints, hinges etc. High capillary effect thanks to a new active agent formula. A perfect product for maintenance in industry, crafts and hobbies. Displaces moisture, protects all metal surfaces, facilitates assembly and dismantling. Prevents fretting corrosion and squeaking.



Item No.: WS 36-400 · Contents: 400 ml · VPE: 12 pcs.

WS 38 SPECIAL RUST REMOVER



WS 38 has been developed especially for extremely tight and rusted connections. The finest MoS₂ particles and synthetic substances dissolve rust and enable easy disassembly. The high capillary effect makes this product a must for repair and maintenance work. WS 38 penetrates quickly, eliminates moisture and protects against corrosion.

Also sold separately in canisters!



Item No.: WS 38-400 · Contents: 400 ml · VPE: 12 pcs.

WS 39 RUST SHOCK



WS 39 is a composition of biodegradable oils and alcohol. The specially adapted combination of active substances effect a cold shock on the corroded component. Due to its capillary effect, WS 39 penetrates deep down into the gaps. The product contains corrosion-resistant components, which prevent a repeat build-up of rust in the long term.



Item No.: WS 39-400 · Contents: 400 ml · VPE: 12 pcs.

WS 40 MULTI-PURPOSE SPRAY



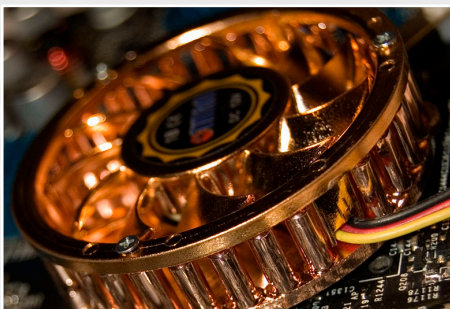
WS 40 lubricates hinges, connectors, wheels, rollers, handles, locks on windows and doors, springs, leaf springs, etc. WS 40 is a corrosion protection, a rust remover, a lubricant, and a cleaning agent in one. Eliminates humidity (e.g. in electrical contacts, ignition systems, engine and power tools, two-wheeled vehicles, small engines, etc.) Cleans, maintains and protects in a single operation. Penetrates grease and dirt, and forms a corrosion-resistant protective layer.

Also sold separately in canisters!



Item No.: WS 40-400 · Contents: 400 ml · VPE: 12 pcs.

WS 44 ELECTRONICS SPRAY



WS 44 has been developed especially for electronic components. Cleans and maintains electrical contacts and metal parts due to even spray distribution. It displaces moisture on the electronic components, and protects the contacts against corrosion and oxidation.



Item No.: WS 44-400 · Contents: 400 ml · VPE: 12 pcs.

WS 66 RUST CONVERTER & PRIMER



Rust-converting, elastic single-component primer for particularly adhesive recoating. For iron, aluminium, galvanisation, corrugated iron, concrete and asbestos cement. Can be re-coated and re-sprayed, extremely weatherproof, heat, seawater, oil and petrol resistant.

1 product – 3 properties:
Rust converter, primer and filler

Colour: russet

Item No.: WS 66-400 · Contents: 400 ml · VPE: 12 pcs.



WS 68 WEDGE AND BELT SPRAY

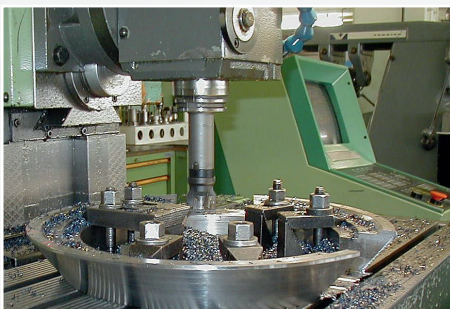


WS 68 is a highly efficient spray for wedges, as well as round and flat belts. It preserves, protects and conserves in a single step. The belt tension is increased significantly, and prevents the belt from slipping. Prevents drying and therefore reduces the risk of belt breakage.

Item No.: WS 68-400 · Contents: 400 ml · VPE: 12 pcs.



WS 70 DRILLING AND CUTTING OIL



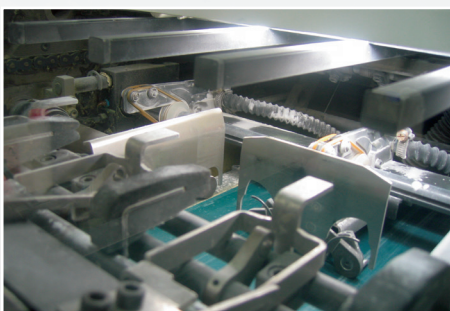
WS 70 consists of a combination of natural oils that provide optimum results in drilling, cutting, milling and turning. This product is also suitable for drinking water pipelines and other lines in the food sector. WS70 is a transparent drilling and cutting oil for machining of iron, stainless steel and alloyed metal. It has a low consumption due to the good surface adhesion.

Also sold separately in canisters!

Item No.: WS 70-400 · Contents: 400 ml · VPE: 12 pcs.



WS 72 PTFE SPRAY (DRY LUBRICANT)



Versatile as a grease-free lubricating, release and maintenance agent, e.g. on slipways in the plastics industry. Sticks to glass, rubber, wood, plastic and metal (temperatures ranging from -180 °C to +260 °C). It is simultaneously water resistant and protective against corrosion. An ideal way to avoid creaking and squeaking noises caused by various material combinations. Reduces friction and abrasion, prevents dust formation. Especially suitable for mould removal due to its non-stick characteristics, and for use as an anti-stick agent for coating seals, O-rings, and for lubrication purposes.

Item No.: WS 72-400 · Contents: 400 ml · VPE: 12 pcs.



WS 73 MULTI-PURPOSE SPRAY



Versatile, colourless lubricating, release and maintenance agents, for use on wood, metal, rubber and other materials. An extremely low friction coefficient is achieved thanks to homogeneous PTFE additives. It is resistant to high pressure. Dust and abrasive materials do not stick. For use on machines in the furniture and wood industry. Temperature stability between -20 °C and +80 °C

Item No.: WS 73-400 · Contents: 400 ml · VPE: 12 pcs.



WS 74 SILICONE SPRAY



Grease-free lubricating, release and maintenance products. Forms an extremely durable lubricating film for seat track, sliding roofs, window guides, guide rails, wheels and rollers. Serves as a protective layer for metal, plastic, leather, rubber and chrome. Displaces moisture in electrical systems and prevents electrical charge and the formation of rust.

Also sold separately in canisters!



Item No.: WS 74-400 · Contents: 400 ml · VPE: 12 pcs.

WS 75 COCKPIT SPRAY

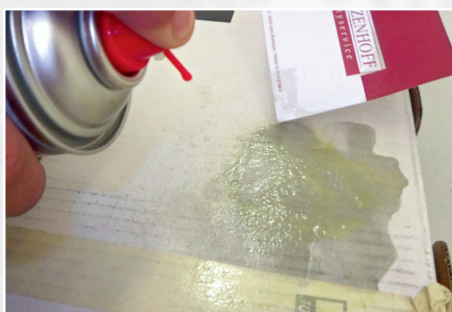


WS 75 preserves all plastic parts in the vehicle without greasing (silicone-free). Dull and weathered plastics are refreshed and get their original appearance back. It is antistatic and dust repellent, and leaves a pleasant fragrance.



Item No.: WS 75-400 · Contents: 400 ml · VPE: 12 pcs.

WS 78 SPRAY ADHESIVE

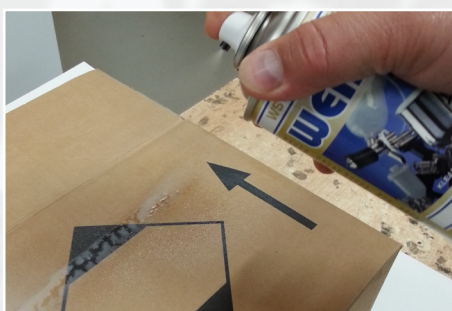


Can be used as an assembly, pressure-sensitive, or contact adhesive. Perfect for bonding materials such as wood, cork, leather, textiles, felt, rubber, plastic and foam, as well as glass, ceramics and metal. Fit components together precisely, press briefly and powerfully.



Item No.: WS 78-400 · Contents: 400 ml · VPE: 12 pcs.

WS 79 SPECIAL SPRAY ADHESIVE

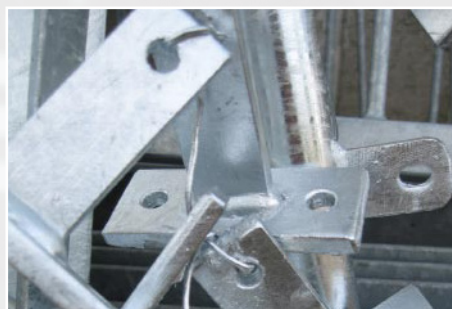


WS 79 is a high-quality styrene butadiene-based sprayable contact adhesive. It quickly and reliably sticks paper, cardboard, foam, several types of plastic, rubber, leather, textiles, metal, glass, wood, etc. Special spray nozzle for adjusting the spray volume and spray jet.



Item No.: WS 79-400 · Contents: 400 ml · VPE: 12 pcs.

WS 80 ZINC DUST REPAIR SPRAY



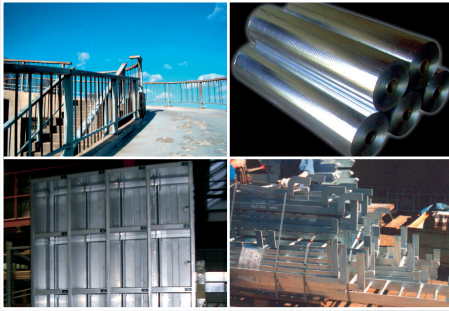
WS 80 is an aluminium paint for repairing and optically adjusting damaged areas and welded joints in galvanised components. Quick-drying, strongly adhesive, weatherproof.

Colour: clear



Item No.: WS 80-400 · Contents: 400 ml · VPE: 12 pcs.

WS 81 ZINK-ALUMINIUM MIX



WS 81 is used to repair damaged zinc coatings, and for covering drilling and welding points. Permanently protects all metal surfaces against rust, corrosion and oxidation. WS 81 is the ideal corrosion protection for car body repairs, spot welding, ventilation technology and steel structures. Always ready to use and economical in application. A layer thickness of 20 - 30 µm is achieved thanks to a single covering film.



Item No.: WS 81-400 · Contents: 400 ml · VPE: 12 pcs.

WS 82 ALUMINIUM SPRAY

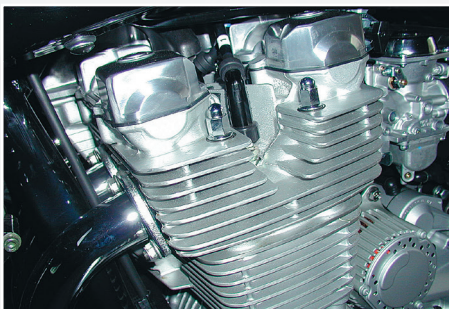


WS 82 provides corrosion protection for exhaust systems, aluminium components, galvanised surfaces, damaged galvanisation, coating metals and surface finishes.



Item No.: WS 82-400 · Contents: 400 ml · VPE: 12 pcs.

WS 83 CHROME-ALU SPRAY

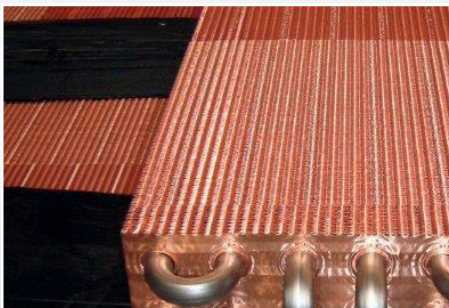


High-quality aluminium coating for all metal surfaces, allowing them to maintain a shiny chrome effect. Temperature-resistant up to 800 °C. The product becomes abrasion-resistant by heating. Fast-drying.



Item No.: WS 83-400 · Contents: 400 ml · VPE: 12 pcs.

WS 84 COPPER SPRAY



WS 84 is the perfect tool in many parts of the craft and hobby industry. It provides excellent protection against the effects of the weather, and is well-suited for refitting copper-plated components such as gutters, pipes, etc. Good adhesion to just about all metals, glass, wood and plastics.



Item No.: WS 84-400 · Contents: 400 ml · VPE: 12 pcs.

WS 85 ZINC DUST SPRAY



WS 85 is a durable means of rust-proofing, with 99% pure zinc. Electrically conductive, therefore also suitable for use as welding primer. For repairing damaged areas and welded joints. Strongly adhesive. Quick-drying. Resistant to salt, rust and water. Temperature-resistant up to +500 °C, can be painted over.

Also sold separately for painting on!



Item No.: WS 85-400 · Contents: 400 ml · VPE: 12 pcs.

WS 86 STAINLESS STEEL SPRAY



For the optical refinement of metal components, for protection against corrosion, to repair damaged stainless steel components, truck bodies, silos, pipelines, etc.; secure adhesion to all metal components and metal structures, glass, most plastics, wood, stone, and cardboard. Temperature-resistant up to 300 °C (short-term).

Item No.: WS 86-400 · Contents: 400 ml · VPE: 12 pcs.



WS 87 BRASS SPRAY



WS 87 is the perfect tool in many parts of the craft and hobby industry. It provides excellent protection against the effects of the weather, and is well-suited for refitting chromatised components, and can be used for decorative purposes. Good adhesion to just about all metals, glass, wood and plastics.

Item No.: WS 87-400 · Contents: 400 ml · VPE: 12 pcs.



WS 88 STAINLESS STEEL CARE SPRAY



WS 88 is a cleaner and care product. For cleaning and to care for all smooth stainless steel surfaces. Removes grease and cleans without any streaks. Seals the surface with a protective layer which will make water runoff quickly and which prevents renewed smudging. Meets the requirements of USDA/NSF H1, DAB 10 and the EU Pharmacopoeia.

Item No.: WS 88-400 · Contents: 400 ml · VPE: 12 pcs.



WS 90 PAINT REMOVER SPRAY



WS 90 solves and removes sealing residuals quickly and easily as well as hardened adhesive residuals, paints and lacquers. Ideal as paint stripper. Solves residuals of oil, resin, grease and tea. WEKEM glue and sealing remover is applicable on metal, glass, wood, ceramic, stone and many others. For sensitive surfaces, please test on concealed area first.

Item No.: WS 90-400 · Contents: 400 ml · VPE: 12 pcs.



WS 92 MULTINOX STAINLESS STEEL POLISH



WS 92 is a special high-efficiency care product for metal, lacquers and plastics. Chrome and stainless steel surfaces radiate a new-found splendour. MULTINOX repels fingerprints and humidity. Through modern active components, a protective film is formed which seals the surface in the long term.

High-gloss polish from a spray can.

Item No.: WS 92-400 · Contents: 400 ml · VPE: 12 pcs.



WS 94 LABEL REMOVER



WS 94 removes all kinds of paper labels from almost all surfaces in the shortest possible time. Adhesive residue from foil labels is removed easily and cleanly. The natural citrus extract soaks through the label, and dissolves the adhesive layer.



Item No.: WS 94-400 · Contents: 400 ml · VPE: 12 pcs.

WS 130 LEAK DETECTION SPRAY



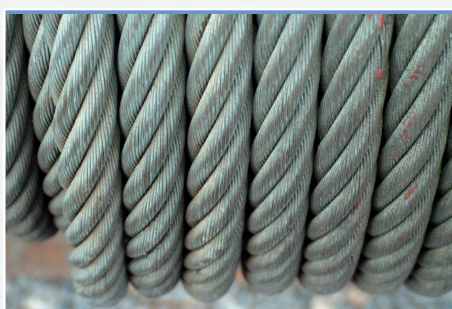
Tightness inspection equipment for compressed gas, heating gas and compressed air systems of all kinds. Quickly and reliably detects leakages in brake and pipe lines, valves, fittings, soldered and welded joints, fittings, etc. Put line under pressure, and spray the product from a distance of approx. 30 cm. Blistering makes all leaks visible.

Also available with frost protection, and separately in canisters!



Item No.: WS 130-400 · Contents: 400 ml · VPE: 12 pcs.

WS 167 CHAIN AND ROPE SPRAY

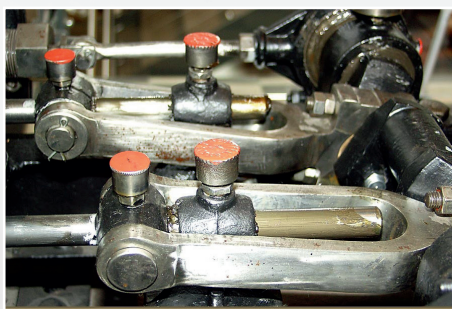


Perfectly able to withstand stress and reduce wear and tear on all kinds of slow and fast running chains and wire cables. Adhesive strength, no dripping in rapid circulation. High diffusion and penetration in chain links, bolts, cable strands, bearings, etc. – reduces the operating power due to the decreased friction. Corrosion protection in humid, aggressive atmospheres. Transparent, colourless lubricating film. Compatible with commonly-used sealing materials, impregnating agents, and mineral oils. Very economical due to high reliability and secure long-term lubrication.



Item No.: WS 167-400 · Contents: 400 ml · VPE: 12 pcs.

WS 267 WHITE GREASE SPRAY WITH PTFE



A permanently lubricating, high-performance grease for all moving parts, sliding parts and friction surfaces. A perfect adhesive lubrication for chains, gears, hinges, guide rails and ball bearings. Also ideal for use as a mould release agent. The white grease spray forms an extremely durable, water-resistant lubricating and sliding film. Anticorrosive additives reduce rust formation, and therefore friction and wear. Even under extreme pressure and high temperatures, special PTFE components provide excellent wear protection.



Item No.: WS 267-400 · Contents: 400 ml · VPE: 12 pcs.

WS 300 COOLING SPRAY

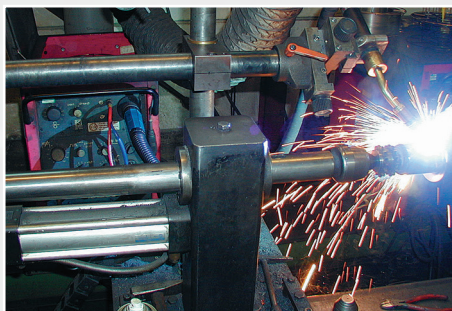


A fast-acting means of freezing and shrinking metals. For troubleshooting in the event of thermal interruptions. Avoids heat damage during soldering. Highly efficient and economical.



Item No.: WS 300-400 · Contents: 400 ml · VPE: 12 pcs.

WS 320 WELDING PROTECTION SPRAY

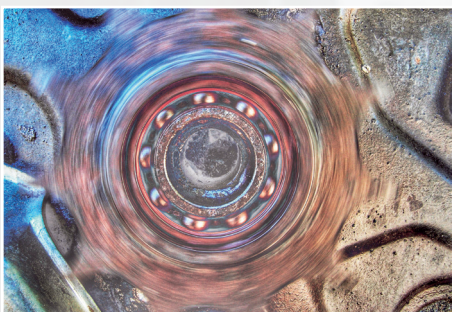


Prevents the adhesion of weld spatters. Protects nozzles and components against the sticking of welding beads. Does not affect subsequent paintwork; silicone-free.

Item No.: WS 320-400 · Contents: 400 ml · VPE: 12 pcs.



WS 367 HIGH PRESSURE BONDING LUBRICATION



WS 367 is highly durable and wear-resistant. Adhesive strength, no dripping in rapid circulation. High diffusion and penetration in chain links, bolts, cable strands, bearings, etc. – reduces the operating power due to the reduced friction. Corrosion protection in humid, aggressive atmospheres. Very economical due to high reliability and secure long-term lubrication.

Item No.: WS 367-400 · Contents: 400 ml · VPE: 12 pcs.



WS 368 HIGH-PERFORMANCE ADHESIVE LUBRICANT

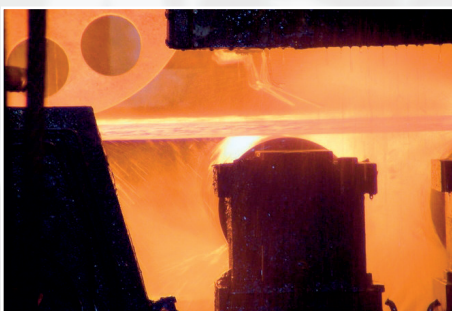


WS 368 is a highly adhesive, high-pressure resistant and extremely penetrative adhesive lubricant. Long-term protection against corrosion; alkali and salt water resistant.

Item No.: WS 368-400 · Contents: 400 ml · VPE: 12 pcs.



WS 400 METAL GLIDE



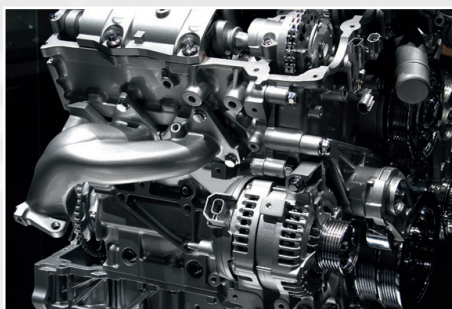
WS 400 is a highly efficient lubricant and means of corrosion protection against seizing-up, wear and tear and scaling. Ideal in high temperature ranges and wet areas. Can be used on sliding rails, plug connectors, bolts, screws, flanges, etc. Also protects against aggressive media. Highly durable and adhesive. Long-term protection. Temperature range: -180 °C to +1200 °C

Also available as a paste!

Item No.: WS 400-400 · Contents: 400 ml · VPE: 12 pcs.



WS 430 PROTECTIVE ENGINE LACQUER

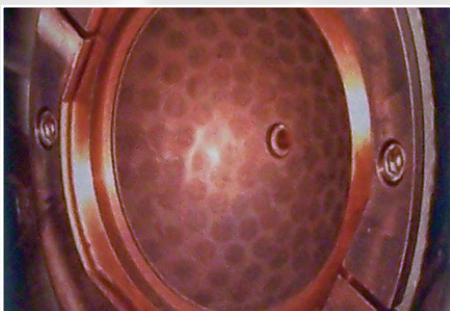


WS 430 is a temperature-resistant protective paint for all motors. The application areas for the protective engine paint are: Distributor, battery, cables and engine compartment.

Item No.: WS 430-400 · Contents: 400 ml · VPE: 12 pcs.



WS 440 CORROSION PROTECTION WAX



Protects all metals and unpainted components against rust, water, dirt, gritting salt etc. It is the ideal protective film for preserving tools and precision components. Media resistant, long-term protection.

Also sold separately in canisters!



Item No.: WS 440-400 · Contents: 400 ml · VPE: 12 pcs.

WS 467 BATTERY POLE PROTECTION



WS 467 provides protection for the contacts of all electrical components in vehicle construction. Highly viscous composition. Ideal for all vehicle batteries (cars, trucks, motorbikes, agricultural machinery, maritime vessels).



Item No.: WS 467-300 · Contents: 300 ml · VPE: 12 pcs.

WS 468 GEAR PROTECTION SPRAY

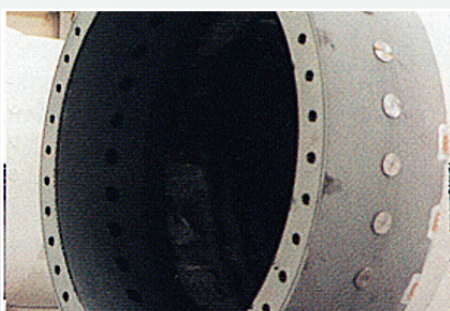


WS 468 is perfect for lubricating gears, gear racks, chains and traction ropes. Dampens sound, ensures smooth running, and protects against wear and corrosion. Forms a dry adhesive, pressure-resistant, protective and lubricating film. This is viscous and waterproof. Does not become brittle at low temperatures; heat resistant solid lubricant film up to approx. 300 °C.



Item No.: WS 468-400 · Contents: 400 ml · VPE: 12 pcs.

WS 500 PRIMER GREY

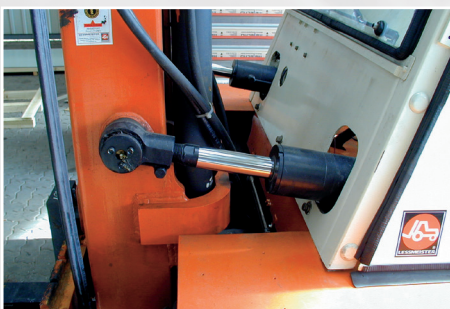


Rust protection primer and filler, ideal primer for lacquers and coatings. Used as a base primer for all subsequent painting processes. Fast-drying.



Item No.: WS 500-400 · Contents: 400 ml · VPE: 12 pcs.

WS 510 FORKLIFT PAINTWORK, BLOOD ORANGE



WS 510 is fast-drying, light-resistant, and weatherproof. For lacquer repairs on forklifts and warehouse equipment.

Colour: blood orange



Item No.: WS 510-400 · Contents: 400 ml · VPE: 12 pcs.

WS 511 FORKLIFT PAINTWORK, ANTHRACITE



WS 511 is fast-drying, light-resistant, and weatherproof. For lacquer repairs on forklifts and warehouse equipment.

Colour: anthracite

Item No.: WS 511-400 · Contents: 400 ml · VPE: 12 pcs.



WS 520 THERMAL GLOSS PAINT BLACK



WS 520 is for exhaust pipes, engine, flue pipes, etc. Quick-drying temperature: up to + 600 °C

Colour: black

Item No.: WS 520-400 · Contents: 400 ml · VPE: 12 pcs.



WS 521 THERMAL GLOSS PAINT SILVER



WS 521 is for exhaust pipes, engine, flue pipes, etc. Quick-drying temperature: up to + 600 °C

Colour: silver

Item No.: WS 521-400 · Contents: 400 ml · VPE: 12 pcs.



WS 530 RALLY BLACK



Acrylic lacquer for attaching stripes and decorative objects. Weatherproof and quick drying. Perfect for painting decorative stripes onto vehicles for that sporty look.

Item No.: WS 530-400 · Contents: 400 ml · VPE: 12 pcs.



WS 567 SERVICE SET



WS 567 contains the most important products for "minor" maintenance tasks.

In quantities of 150 ml:
Cleaning spray and degreaser
glide spray and lubrication
multi-purpose spray

An ideal service set for forklifts and technical devices.

Item No.: WS 567S · Contents: 3 x 150 ml · VPE: 1 pcs.



WS 568 MAINTENANCE SET



The maintenance set – rapid assistance for your service and maintenance needs.

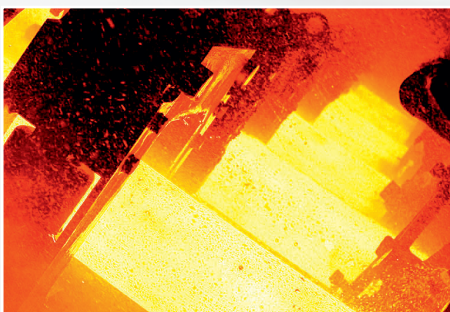
In quantities of 150 ml:
Cleaning spray and degreaser
glide spray and lubrication
chain spray and adhesive lubricant

An ideal service set for forklifts and technical devices.

Item No.: WS 568S · Contents: 3 x 150 ml · VPE: 1 pcs.



WS 600 HTC CERAMIC SPRAY



WS 600 is a non-metallic, high-temperature, pressure-resistant and metal-free special lubricant. Ideal as a separating agent for temperature-exposed threaded connections made of stainless and alloy steel. Special long-term protection prevents burning and scaling, and protects against corrosion.

Also available as an HTC paste (in different size containers)!

Item No.: WS 600-400 · Contents: 400 ml · VPE: 12 pcs.



WS 640 ANTI SEIZE COPPER SPRAY



WS 640 prevents corrosion, seizing-up and burning. It protects, separates and lubricates, even at high temperatures. Ideal for motors, pumps, gears, brake systems, etc. – Professional quality for industry and trade.

Also available as a paste (in different size containers)!

Item No.: WS 640-400 · Contents: 400 ml · VPE: 12 pcs.



WS 667 PROFI DRY CHAIN SPRAY



WS 667 based on synthetic raw materials. The ingredients ensure perfect lubrication at all stress levels. As a dry lubricant, PTFE improves performance and reduces wear and friction. This perfectly adapted formula prolongs the lifespan of drive chains.

Item No.: WS 667-400 · Contents: 400 ml · VPE: 12 pcs.



WS 692 PROFI GLOSS POLISH



WS 692 motorcycle, chrome and paint polish protects and preserves in a single polishing process. Special wax components ensure long lasting smoothness with a shining effect. A long-lasting formula with active pearls protects the surface against recontamination.

Suitable for vintage and classic cars, and all motor vehicles.

Item No.: WS 692-400 · Contents: 400 ml · VPE: 12 pcs.



WS 1000 BRAKE CLEANER



Specialised for use in engines, brakes, actuators and gears. The ideal tool for assembling and repairing. Micro-active, residue-free, and evaporates quickly. WS 1000 removes grease, dust, dirt, metal residue and abrasion from gear and brake pads, without residue oil.

Also sold separately in canisters!

Item No.: WS 1000-500 · Contents: 500 ml · VPE: 12 pcs.



WS 1100 PROFI POWER BRAKE CLEANER



Power brake cleaner removes oil and greasy residues from various surfaces and materials. It is the ideal cleaning agent for use in industry, trade, repairs, installation, maintenance and restoration. Removes pore-deep grease, oil, dirt, soot etc. Ideal for the preparation of adhesions that require a grease-free surface.

The product is characterised by more pressure for a stronger jet spray.

Item No.: WS 1100-400 · Contents: 400 ml · VPE: 12 pcs.



WS 1110 SPECIAL BRAKE CLEANER



Specialised for use in engines, brakes, actuators and gears. Due to its special spray technology, even inaccessible areas can be easily cleaned. The ideal tool for assembling and repairing. Micro active, residue-free, evaporates quickly. WS 1110 removes oil, dust, dirt, metal residue and abrasion from clutch and brake pads.

Item No.: WS 1110-500 · Contents: 500 ml · VPE: 12 pcs.



WS 1200 BURNER CLEANER



Cleans and removes soot and oil spills from heating systems and burners, without residue. Ideal for cleaning and maintenance. Reduces consumption and energy costs.

Item No.: WS 1200-500 · Contents: 500 ml · VPE: 12 pcs.



WS 2000 PROFI SPRAY CLEANER



For professional use in industry and assembly. Removes pore-deep grease, oil, dirt, soot etc. – perfect for preparing adhesive surfaces. Fast residue-free ventilation through an active formula.

Also sold separately in canisters!

Item No.: WS 2000-500 · Contents: 500 ml · VPE: 12 pcs.



WS 2400 PROFI ASSEMBLY CLEANER CITRUS



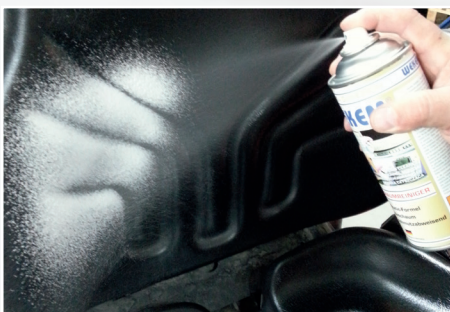
WS 2400 is specialised for professional use in industry and assembly. Removes pore-deep grease, oil, dirt, soot etc. – perfect for preparing adhesive surfaces. Fast residue-free ventilation. With citrus scent!

Also sold separately in canisters!

Item No.: WS 2400-500 · Contents: 500 ml · VPE: 12 pcs.



WS 3000 PROFI FOAM CLEANER



WS 3000 is used for the fast and gentle cleaning of glass, metals, fitting, plastics, carpets, screens, housing, etc. Easily removes dust, grease, nicotine deposits, insects, etc. Does not attack surfaces. Anti-static additives for protection against recontamination.

Item No.: WS 3000-400 · Contents: 400 ml · VPE: 12 pcs.



WS 3100 COMPRESSED AIR SPRAY



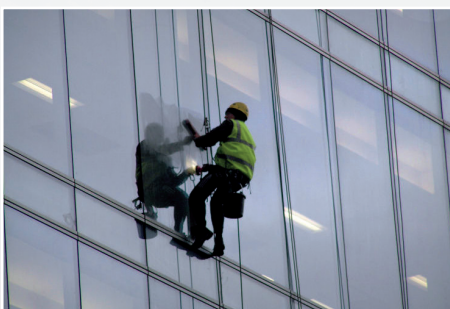
WS 3100 removes dust and loose dirt, even in areas which are hard to reach. Delicate surfaces can be cleaned without contact. Ideal for office keyboards and computers.

Also available with extension tubes!

Item No.: WS 3100-400 · Contents: 400 ml · VPE: 12 pcs.



WS 3600 WINDOW AND GLASS CLEANER



Reliably cleans all glass and plastic surfaces such as car windscreens and headlights, window panes, glass tables, etc. Special formula containing alcohol, for that radiant shine.

Also sold separately in canisters!

Item No.: WS 3600-400 · Contents: 400 ml · VPE: 12 pcs.



CAN'T FIND WHAT YOU'RE LOOKING FOR?

Due to the variety of modern materials which are used in all fields of technology, we offer a very special service. We will work with you, in order to adapt our products to meet the latest professional and environmental requirements.

In addition, we offer customised product developments, special product modifications, and specific settings.

WEKEM

Canisters & loose items

- Loose items in canisters
- Rust removers
- Drilling and cutting oil
- Zinc Dust paint
- Cleaner for industry,
trade and motor vehicles



CANISTERS & LOOSE ITEMS

WEKEN delivers your order as loose items in small and large containers, especially for today's operational processes. Developed in an environmentally friendly manner, and tailored to your application requirements. Service in all aspects of modern workshop technology. Simple, safe, fast.



for intensive cleaning



as a grease remover



for lubrication and maintenance



for welding



as a drilling and cutting oil



for general and industrial cleaning

WS 38 SPECIAL RUST REMOVER



WS 38 has been developed especially for extremely tight and rusted connections. The finest MoS₂ particles and synthetic substances dissolve rust and enable easy disassembly. The high capillary effect makes this product a must for repair and maintenance work. WS 38 penetrates quickly, eliminates moisture and protects against corrosion.

Also available as an aerosol!

Item No.: WS 38-5 · Contents: 5 l · VPE: 1 pcs.

Item No.: WS 38-10 · Contents: 10 l · VPE: 1 pcs.



WS 40 MULTI-PURPOSE OIL



WS 40 lubricates hinges, connectors, wheels, rollers, handles, locks on windows and doors, springs, leaf springs, etc. WS 40 is a corrosion protection, a rust remover, a lubricant, and a cleaning agent in one. Eliminates humidity (e.g. in electrical contacts, ignition systems, engine and power tools, two-wheeled vehicles, small engines, etc.) Cleans, maintains and protects in a single operation. Penetrates grease and dirt, and forms a corrosion-resistant protective layer.

Also available as an aerosol!

Item No.: WS 40-5 · Contents: 5 l · VPE: 1 pcs.



WS 70 DRILLING AND CUTTING OIL



Synthetic oil mixture with optimum corrosion behaviour. Excellent lubricating effect with oxidation protection. For all drilling and cutting tools. Long-term, reliable protection against corrosion and rust. Allows longer tool life, reduces breakage risk.

Also available as an aerosol!

Item No.: WS 70-5 · Contents: 5 l · VPE: 1 pcs.

Item No.: WS 70-10 · Contents: 10 l · VPE: 1 pcs.



WS 74 SILICONE OIL



Grease-free lubricating, release and maintenance products. Forms an extremely durable lubricating film for seat track, sliding roofs, window guides, guide rails, wheels and rollers. Enables the subsequent treatment of injection-moulded components as a mould release agent in the fields of plastic moulding and welding technology.

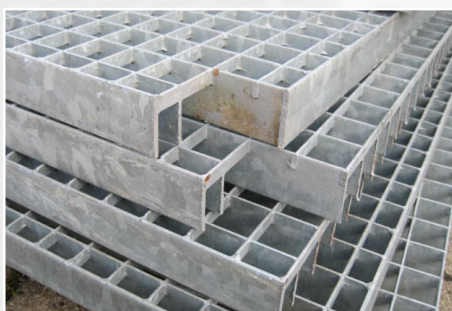
Also available as an aerosol!

Item No.: WS 74-5 · Contents: 5 l · VPE: 1 pcs.

Item No.: WS 74-10 · Contents: 10 l · VPE: 1 pcs.



WS 85 ZINC DUST PAINT



WS 85 is a durable means of rust-proofing, with 99% pure zinc. Electrically conductive, therefore also suitable for use as welding primer. For repairs and optically adjusting damaged areas and welded joints. Strongly adhesive. Quick-drying. Resistant to salt, rust and water. Temperature-resistant up to +500 °C, can be painted over.

Also available as an aerosol!

Item No.: WS 85-800 · Contents: 800 g · VPE: 6 pcs.



WS 130 LEAK DETECTION



Tightness inspection equipment for compressed gas, heating gas and compressed air systems of all kinds. Quickly and reliably detects leakages in brake and pipe lines, valves, fittings, soldered and welded joints, fittings, etc. Put line under pressure, and spray the product from a distance of approx. 30 cm. Blistering makes all leaks visible.

Also available with frost protection, and as an aerosol!

Item No.: WK 130-5 · Contents: 5 l · VPE: 1 pcs.

Item No.: WK 130-10 · Contents: 10 l · VPE: 1 pcs.



WS 440 CORROSION PROTECTION WAX



WS 440 protects all metals and unpainted components against rust, water, dirt, gritting salt etc. It is the ideal protective film for preserving tools and precision components. Media resistance, long-term protection.

Also available as an aerosol!

Item No.: WS 440-10 · Contents: 10 l · VPE: 1 pcs.



WS 1000 BRAKE CLEANER



Specialised for use in engines, brakes, actuators and gears. The ideal tool for assembling and repairing. Micro active, residue-free, evaporates quickly. WS 1000 removes grease, dust, dirt, metal residue and abrasion from gear and brake pads, without residue oil.

Also available as an aerosol!

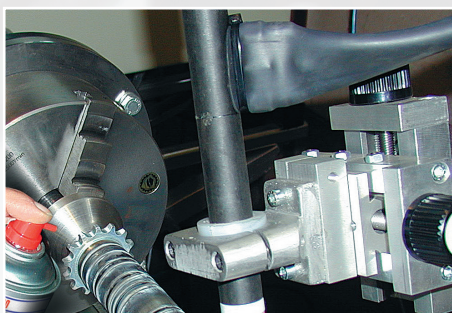
Item No.: WS 1000-5 · Contents: 5 l · VPE: 1 pcs.

Item No.: WS 1000-10 · Contents: 10 l · VPE: 1 pcs.

Item No.: WS 1000-30 · Contents: 30 l · VPE: 1 pcs.



WS 2000 PROFI SPRAY CLEANER



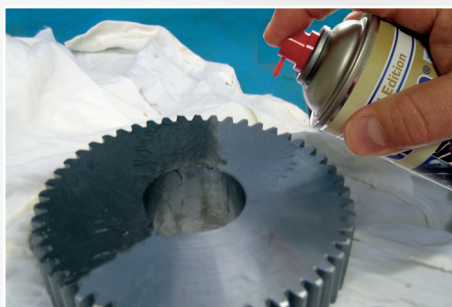
For professional use in industry and assembly. Removes pore-deep grease, oil, dirt, soot etc. – perfect for preparing adhesive surfaces. Fast residue-free ventilation through an active formula.

Also available as an aerosol!

Item No.: WS 2000-5 · Contents: 5 l · VPE: 1 pcs.
Item No.: WS 2000-10 · Contents: 10 l · VPE: 1 pcs.
Item No.: WS 2000-30 · Contents: 30 l · VPE: 1 pcs.



WS 2200 PROFI ASSEMBLY CLEANER



WS 2200 is a special cleaner with which to de-grease and prepare all assembly work in trade and industry. Ideal for the pre-treatment of paint surfaces, even those with stubborn contamination.

Also available as an aerosol!

Item No.: WS 2200-5 · Contents: 5 l · VPE: 1 pcs.



WS 2500 WORKSHOP AND MACHINERY CLEANER



Economical power cleaner with a broad spectrum of applications. Special combination of agents for the removal of oil and grease on all alkali-resistant surfaces and floors. For thorough cleaning of workshops, machines, manufacturing and production halls etc. Cleans and cares for plastics, metals, bricks, rubber, PVC and industrial flooring, after a short reaction time. Suitable for use in high-pressure devices and automatic cleaning. RK listed.

Item No.: WS 2500-5 · Contents: 5 l · VPE: 1 pcs.
Item No.: WS 2500-10 · Contents: 10 l · VPE: 1 pcs.



2600 TERRACE AND YARD CLEANER



Broadband concentrate to remove moss and weather residue on all farm and pavement surfaces. Very economical and quickly effective. A single application is often sufficient. Protects against further growth due to a long-lasting formula. Strongly dilutable.

Item No.: WS 2600-5 · Contents: 5 l · VPE: 1 pcs.
Item No.: WS 2600-10 · Contents: 10 l · VPE: 1 pcs.



WS 2800 OIL NEUTRALISER



The economical power cleaner for industrial production areas, and for degreasing in the municipal sector (building sites, road maintenance, fire service, etc.). With a special combination of agents for the removal of oil and grease on all alkali-resistant surfaces and floors.

High-performance concentrate!

Item No.: WS 2800-10 · Contents: 10 l · VPE: 1 pcs.



WS 2900 GASTRONOMY CLEANER

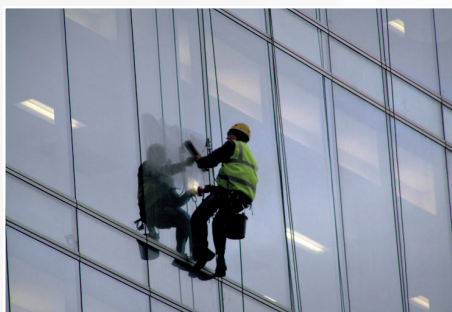


WS 2900 is characterised by its strong grease, oil and gas dissolving capacity, and good dispersing effect. For cleaning floors, walls, ceilings and worktops, ovens, extractor hoods, sinks, smoke ovens etc., as well as all alkaline-resistant surfaces and objects. WS 2900 has been approved for use in the food industry, and is environmentally friendly. Biodegradable pursuant to the German Cleaning Agents and Detergents Act. Suitable for use in high-pressure devices.



Item No.: WS 2900-1000 · Contents: 1000 ml · VPE: 10 pcs.

WS 3600 WINDOW AND GLASS CLEANER



WS 3600 is a professional glass cleaner for all glass surfaces. High glossy effect, short drying time. Protection against recontamination. Also ideal for mirror surfaces.

Also available as an aerosol!



Item No.: WS 3600-10 · Contents: 10 l · VPE: 1 pcs.

WS 3700 PLASTIC CLEANER



WS 3700 is an innovative compound combination that cleans and conserves plastics and their surfaces.



Item No.: WS 3700-10 · Contents: 10 l · VPE: 1 pcs.

THE RIGHT PROFI PRESSURE PUMP VAPORISER FOR EACH PRODUCT



MORE DETAILED DESCRIPTIONS
CAN BE FOUND ON PAGE 53

Find the right pressure pump vaporiser here

Items	Name	WS 6	WS 7	WS 8	WS 9	WS 10
WS-38	Rust remover with MoS ₂		X	X		
WS-40	Multi-purpose oil		X	X		
WS-70	Drilling and cutting oil		X	X		
WS-74	Silicone oil		X			X
WS-130	Leak detector	X	X	X	X	X
WS-1000	Brake cleaner		X	X	X	
WS-2000	Profi spray cleaner		X	X	X	
WS-2200	Profi Assembly cleaner		X	X	X	
WS-2500	Workplace and machine cleaner					X
WS-2600	Terrace and yard cleaner					X
WS-2800	Oil neutraliser					X
WS-2900	Gastronomy cleaner					X
WS-3600	Window and glass cleaner		X	X	X	X
WS-3700	Plastic cleaner					X

WEKEM

Assembly pastes

- Protect against wear
- Ideal for bolt guides
- Extremely durable in high temperatures

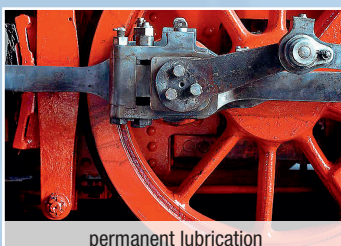


WEKEM ASSEMBLY PASTE

Assembly pastes protect against wear, corrosion, seizing, abrasion, pitting and galvanising. Ideal for bolt guides, and screw and flange connections. Different combinations are available, depending on the application. Extremely durable in the face of high temperatures and aggressive media.



Corrosion protection



permanent lubrication



friction reduction



high-tech maintenance agents

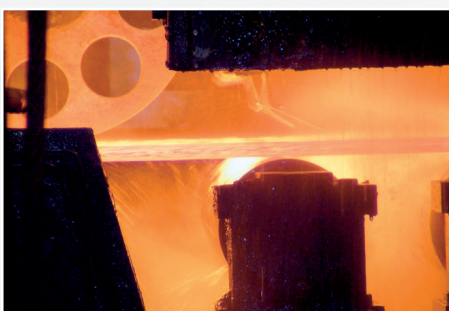


protection against high temperatures



anti-seize

WS 400 METAL GLIDE



WS 400 is a highly efficient lubricant and means of corrosion protection against seizing-up, wear and tear and scaling. Ideal in high temperature ranges and wet areas. Can be used on sliding rails, plug connectors, bolts, screws, flanges, etc. Also protects against aggressive media. Highly durable and adhesive. Long-term protection. Temperature range: -180 °C to +1200 °C

Also available as a spray!

Item No.: WS 400-500 · Contents: 500 g · VPE: 12 pcs.


Item No.: WS 400-1000 · Contents: 1000 g · VPE: 6 pcs.



WS 600 HTC TUBE



WS 600 is a white, ceramic-based, high-temperature, pressure-resistant and metal-free special lubricant. Ideal as a separating agent for temperature-exposed threaded connections made of stainless and alloy steel. Special long-term protection prevents burning and seizure, and protects against corrosion. Special tube for minimal use. An all-rounder in high temperatures (up to 1400 °C). A modern, high-end material. Optimal dosage via tube needle. Perfect for inserts and small screw connections.

Approval by  under Tox. No. 180514

Item No.: WS 600-030 · Contents: 30 g · VPE: 10 pcs.



WS 600 HTC PRESSPACK



WS 600 is a white, ceramic-based, high-temperature, pressure-resistant and metal-free special lubricant. Ideal as a separating agent for temperature-exposed threaded connections made of stainless and alloy steel. Special long-term protection prevents burning and seizure, and protects against corrosion. Special dosing device, which facilitates precise application. An all-rounder in high temperatures (up to 1400 °C). A modern high-end material, which is a must for any workshop.

Approval by  under Tox. No. 180514

Item No.: WS 600-200 · Contents: 200 ml · VPE: 12 pcs.



WS 600 HTC SET



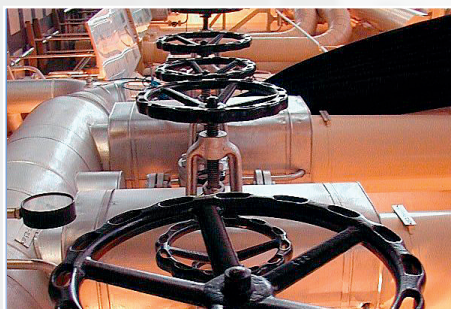
See WS 600 presspack for a description.

Complete product and dosing set with various dosing attachments. The set consists of: Angle dispenser, blue; angle dispenser, 6mm; attachable brush. Using this set makes it possible to apply the required quantity of the product.

Approval by  under Tox. No. 180514
Item No.: WS 600-200S · VPE 1 pc.



WS 600 HTC CERAMIC PASTE



White metal-free paste for lubricating sliding surfaces, on which for specific reasons, the use of metal-containing lubricants is either impossible or undesired. The ceramic paste prevents electrolytic corrosion and is temperature resistant up to + 1400°C. The value pack is ideal for maintenance and repairs. The product can be applied by brush (in the lid in the 500g container) over a large area.

Also available as an aerosol!

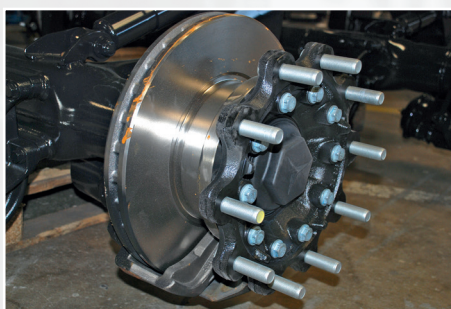
Item No.: WS 600-500 · Contents: 500 ml · VPE: 12 pcs.

Item No.: WS 600-1000 · Contents: 1000 ml · VPE: 6 pcs.

Item No.: WS 600-10 · Contents: 10 kg · VPE: 1 pcs.



WS 640 COPPER PASTE TUBE



WS 640 prevents corrosion, seizing-up and burning. WS 640 protects, separates and lubricates, even at high temperatures. Ideal for motors, pumps, gears, brake systems, etc. – Professional quality for industry, trade and motor vehicles. Temperature range: -40 °C to +1100 °C. The perfect package for on the go. Suitable for every assembly and workshop kit.

Item No.: WS 640-080 · Contents: 80 g · VPE: 24 pcs.



WS 640 COPPER PASTE



WS 640 prevents corrosion, seizing-up and burning. WS 640 protects, separates and lubricates, even at high temperatures. Ideal for motors, pumps, gears, brake systems, etc. – Professional quality for industry, trade and motor vehicles. Temperature range: -40°C to +1100°C. The bulk pack is for everyday use in continuous operations.

Also available as an aerosol!

Item No.: WS 640-500 · Contents: 500 g · VPE: 12 pcs.

Item No.: WS 640-1000 · Contents: 1000 g · VPE: 6 pcs.



TYPICAL AREAS OF APPLICATION:

Industry: Flange and pipe connections, heat exchanger joints, valve spindles, pump systems, brake systems, shafts and axles, gears, machine tools, sliding tracks, conveyor chains etc.

Any questions? Call us on +49 (0) 23 89 - 40 30 10, or e-mail us at: vertrieb@wekem.de

WEKEM

Lubricants

- Fine oils
- Graphite
- High-performance grease
- Silicone grease

OILS AND GREASE



WF 42 GRAPHITE



Fine graphite is very electrically and thermally conductive. It is only damaged by hot, concentrated sulphuric or nitric acid. Another advantage of graphite is its low expansion coefficient. Approx. half of it is made of glass. Ideal for car and cylinder locks, mechanical measuring instruments, hinges, bolts, extension ladders, extendable tables, leaf springs, joints, etc. Also prevents the freezing of rubber seals and profiles (car doors)



Item No.: WS 42-100 · Contents: 100 ml · VPE: 25 pcs.

WS 43 UNIVERSAL LUBRICANT



WS 43 is ideally suited for the lubrication of moving parts, for example, hinges, playground equipment, Bowden cables, saw chains, etc. Excellent anticorrosive and wear protection characteristics.



Item No.: WS 43-500 · Contents: 500 ml · VPE: 20 pcs.

WF 45 UNIVERSAL OIL



WF 45 is a multi-purpose oil for many lubrication tasks, e.g. padlocks, mechanical sliding locks, bicycle maintenance, conservation and protection. Anti-corrosive, water displacing, anti-wear



Item No.: WS 45-100 · Contents: 100 ml · VPE: 25 pcs.

WF 46 CHAIN OIL



WF 46 chain oil for the lubrication of chains, Bowden cables, chain saws, articulated joints, etc. Strongly adhesive, high penetration.



Item No.: WS 46-100 · Contents: 100 ml · VPE: 25 pcs.

WF 47 BIO ADHESIVE OIL



Bio-adhesive oil is a mineral oil-free, easily biodegradable, environmentally friendly, and vegetable oil-based lubricant. Bio-adhesive oil is suitable for the lubrication of chains, Bowden cables, playground equipment, saw chains, hinges on garden gates etc.



Item No.: WS 47-125 · Contents: 125 ml · VPE: 25 pcs.

WF 48 SEWING MACHINE OIL

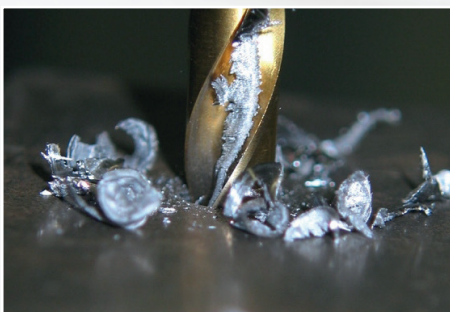


WF 48 is a special oil which is used to lubricate and preserve sewing machine parts, e.g. slides, spindle joints, etc. Excellent penetration when applied.



Item No.: WS 48-100 · Contents: 100 ml · VPE: 25 pcs.

WS 70 DRILLING AND CUTTING OIL



WS 70 is a thread cutting agent for all metals with high cutting performance. Economical in use. For thread cutting, drilling, milling and sawing. Ideal for processing metals.



Item No.: WS 70-100 · Contents: 100 ml · VPE: 25 pcs.

WF 2167 LONG-LIFE/HEAVY-DUTY GREASE



WF 2167 is a strongly adhesive, water and oxidation resistant high pressure grease for heavily burdened lubrication points.



Item No.: WS 2167-400 · Contents: 400 ml · VPE: 20 pcs.

Item No.: WS 2167-1000 · Contents: 1000 ml · VPE: 6 pcs.

WF 2168 MULTI-PURPOSE GREASE



WF 2168 is a permanent mineral oil and lithium soap-based lubricant for the lubrication and sealing of roller bearings at low and normal temperatures, with low and normal loads, and with low and normal speeds. WF 2168 is applied in the fields of construction machinery, agricultural machinery, industrial vehicles, etc.



Item No.: WS 2168-100 · Contents: 100 ml · VPE: 25 pcs.

Item No.: WS 2168-400 · Contents: 400 ml · VPE: 20 pcs.

Item No.: WS 2168-1000 · Contents: 1000 ml · VPE: 6 pcs.

WF 2169 BALL-BEARING GREASE



WF 2169 is a lithium-emulsified and mineral oil-based lubricant in consistency class 2, with excellent lubricating properties. It is very adhesive, resistant to oxidation and operatively stable. WF 2169 is also strongly water resistant, and has very good corrosion protection properties. It is ideal for use with sliding and roller bearings, as well as on spindles and guides.



Item No.: WS 2169-50 · Contents: 50 ml · VPE: 10 pcs.

Item No.: WS 2169-100 · Contents: 100 ml · VPE: 25 pcs.

WF 4 SILICONE GREASE



Silicone grease with PTFE for changing temperature loads, e.g. easier start-up at low temperatures and continual pressure in the range of -40°C to +200°C. Suitable for metal, plastic, rubber compounds. NSF Class H1 certified. Neutral taste and odour. Suitable for use in the food industry. Prevents the growth of mould, even if the humidity is high. The silicone grease is non-flammable, and has good electrical insulating properties (20 kV/mm).



Item No.: WS 4-1000 · Contents: 1000 ml · VPE: 1 pcs.

WS 174 SILICONE GREASE



WS 174 SILICONE GREASE

Special silicone grease, physiologically inert pursuant to the guidelines of the German Federal Environmental Agency.

O-ring compatible (EPDM, NBR)

temperature range: - 40 °C to + 200 °C

Item No.: WS 174-023 · Contents: 23 g · VPE: 20 pcs.

Item No.: WS 174-1000 · Contents: 1000 g · VPE: 1 pcs.



WEKEM

Superglue

- Strongly adhesive
- Can Be accurately dosed
- Fast-hardening
- Patented locking system



WEKEM SUPERGLUE

WEKEM superglues are single component, cyanoacrylate-based, fast-hardening adhesives, which are used for the high-strength adhesion of various materials, e.g. plastics, elastomers, rubber, and metal.

WEKEM superglues harden under the influence of air humidity, react to pressure, and are available in various viscosities. A small drop usually suffices for permanently joining the components.

Through the polymerisation process, the components are joined together in a matter of seconds: Advantage: no waiting or downtime.

WEKEM superglues are characterised by high mechanical strength, and resistance to ageing, temperature and chemicals.



Item	Base	Viscosity 25°C mPa.s	Hardening time in seconds		
			Metal	Elastomer	Plastic
WK-20	Ethyl	10 - 20	10 - 30	1 - 3	2 - 4
WK-30	Ethyl	5 - 10	30 - 50	3 - 8	2 - 4
WK-110	Ethyl	140	5 - 40	5 - 10	2 - 4
WK-125	Ethyl	60 - 100	20 - 60	6 - 12	4 - 6
WK-250	Ethyl	150 - 300	10 - 50	1 - 4	2 - 4
WK-1400	Ethyl	600 - 1500	20 - 50	1 - 4	5 - 7
WK-2400	Ethyl / schwarz	2000 - 4000	30 - 90	9 - 13	7 - 13
WK-2500	Ethyl	2000 - 3000	45 - 70	7 - 11	7 - 13
WK-3000	2-Ethyl	Gel	5 - 10	-	10 - 15
WK-Gel	Ethyl	8000 - 30000 Thixo	45 - 120	10 - 14	13 - 15
WK-45	Alcoxy	40 - 80	15 - 60	2 - 4	14 - 17

WEKEM SUPERGLUE



Strongly adhesive

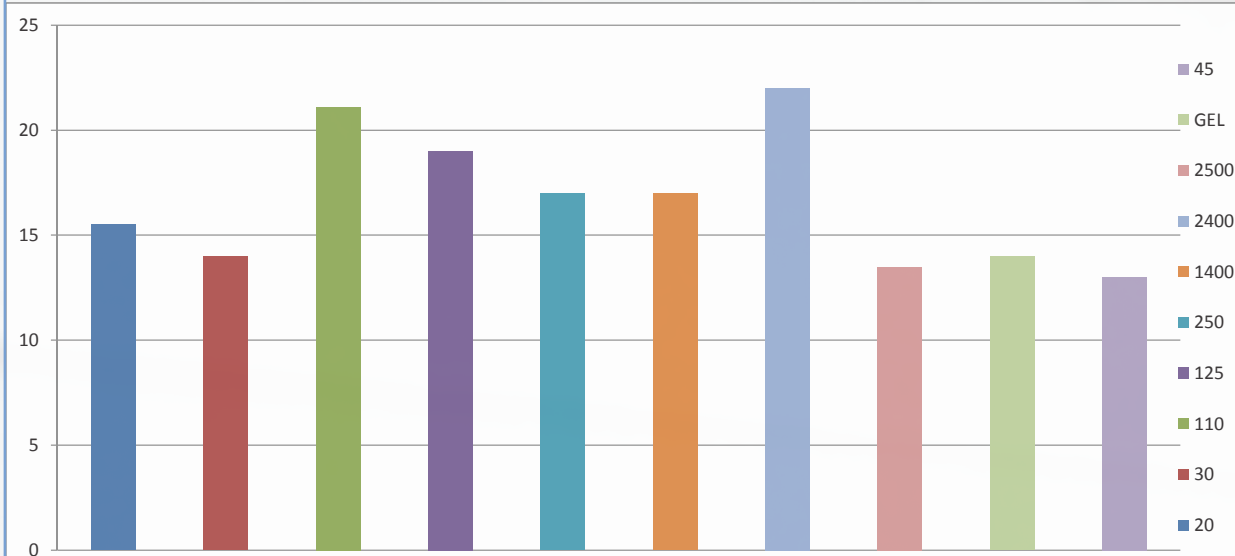


Can be accurately dosed



Fast-hardening

Tensile shearing strength N/mm²



Tensile shearing strength on steel	Temperature range	Density g/cm ³	Description/recommended application
10 - 20 N/mm ²	-55 - +95°C	1,06	Extremely fast and ageing-resistant rubber and EPDM combination.
10 - 22 N/mm ²	-55 - +95°C	1,06	Specially created for use with WK 10 filler.
10 - 20 N/mm ²	-55 - +95°C	1,06	Universally applicable and fast for absorbent and porous materials such as leather and wood. Good for combining plastics and metals.
10 - 28 N/mm ²	-55 - +95°C	1,09	High-strength; ideally suited to rubber-metal and metal-plastic combination.
10 - 22 N/mm ²	-55 - +95°C	1,05	Ideally suited for use on rubber and EPDM.
10 - 20 N/mm ²	-55 - +95°C	1,06	Slow hardening, good rigidity. Ideal for all absorbent materials such as leather, wood, cork, etc.
10 - 28 N/mm ²	-55 - +140°C	1,06	Very fast, ideal for rubber, foam rubber, EPDM elastomers and plastics/rubber which are hard to combine.
10 - 28 N/mm ²	-55 - +140°C	1,06	Universally applicable and fast for absorbent materials such as leather and wood. Also suitable for metal.
15 - 18 N/mm ²	-20 - +80°C	-	2 K superglue, gap-filling, for bonding and repairing several materials.
10 - 17 N/mm ²	-55 - +95°C	1,08	For porous and absorbent surfaces and large tolerances, pastes; processing on vertical surfaces also possible.
10 - 24 N/mm ²	-30 - +70°C	1,04	Odourless and no efflorescence; no impurities on electrical contacts. Universally applicable.

WK 20 SUPERGLUE



WK 20 is fast-hardening, high strength, durable, and suitable for EPDM elastomers, rubber, foam rubber, and plastics which are difficult to glue. Perfect for manufacturing O-rings. Low viscosity and super fast.

Item No.: WK 20-020 · Contents: 20 g · VPE: 20 pcs.
Item No.: WK 20-050 · Contents: 50 g · VPE: 10 pcs.
Item No.: WK 20-500 · Contents: 500 g · VPE: 1 pcs.



WK 30 SUPERGLUE



Universal product with low viscosity, for good and ageing resistant bonding of elastomers and plastics. Ideal for filling cracks, gaps and holes in combination with WK 10 filler.

Item No.: WK 30-050 · Contents: 50 g · VPE: 10 pcs.



WK 10 CA FILLING



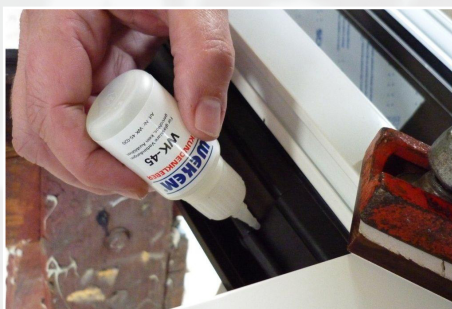
Ideal for filling cracks, gaps and holes in combination with WK 30 superglue.

Also available as a repair set.

Item No.: WK 10-030 · Contents: 30 g · VPE: 10 pcs.



WK 45 SUPERGLUE



WK 45 is odourless and is not efflorescent. No impurities on electrical contacts. Alkoxy-based, and ideal for use in confined spaces.

Item No.: WK 45-020 · Contents: 20 g · VPE: 20 pcs.
Item No.: WK 45-050 · Contents: 50 g · VPE: 10 pcs.
Item No.: WK 45-500 · Contents: 500 g · VPE: 1 pcs.



WK 110 SUPERGLUE



WK 110 is universally applicable and fast, and can be used for absorbent and porous materials such as rubber, wood, leather and cork. Highly suitable for plastic and metal compounds. Simple, secure, high strength and precise.

Item No.: WK 110-020 · Contents: 20 g · VPE: 20 pcs.
Item No.: WK 110-050 · Contents: 50 g · VPE: 10 pcs.
Item No.: WK 110-500 · Contents: 500 g · VPE: 1 pcs.



WK 125 SUPERGLUE



WK 125 for maximum strength. Best results in the bonding of rubber-metal and metal-plastic compounds.

Ethyl based

Item No.: WK 125-020 · Contents: 20 g · VPE: 20 pcs.

Item No.: WK 125-050 · Contents: 50 g · VPE: 10 pcs.

Item No.: WK 125-500 · Contents: 500 g · VPE: 1 pcs.



WK 250 SUPERGLUE



WK 250 has medium viscosity, and therefore there is a short time in which to adjust the glued joints. Best adhesive results when used on rough, absorbent and porous materials.

Item No.: WK 250-020 · Contents: 20 g · VPE: 20 pcs.

Item No.: WK 250-050 · Contents: 50 g · VPE: 10 pcs.

Item No.: WK 250-500 · Contents: 500 g · VPE: 1 pcs.



WK 1400 SUPERGLUE



WK 1400 hardens slowly and has high rigidity. Suitable for metal and hard plastic, and filling large gaps. Viscous. Ideal for all absorbent materials, e.g. leather, wood, cork, etc.

Item No.: WK 1400-020 · Contents: 20 g · VPE: 20 pcs.

Item No.: WK 1400-050 · Contents: 50 g · VPE: 10 pcs.

Item No.: WK 1400-500 · Contents: 500 g · VPE: 1 pcs.



WK 2400 SUPERGLUE



WK 2400 is black, temperature resistant, flexible, and suitable for materials with different expansion coefficients. Temperature-resistant up to 140 °C

Item No.: WK 2400-020 · Contents: 20 g · VPE: 20 pcs.

Item No.: WK 2400-050 · Contents: 50 g · VPE: 10 pcs.

Item No.: WK 2400-500 · Contents: 500 g · VPE: 1 pcs.



WK 2500 SUPERGLUE



WK 2500 is particularly useful at high temperatures. Hardens slowly. Highly shock and peel-resistant. Highly viscous.

Temperature-resistant up to 140 °C

Item No.: WK 2500-020 · Contents: 20 g · VPE: 20 pcs.

Item No.: WK 2500-050 · Contents: 50 g · VPE: 10 pcs.

Item No.: WK 2500-500 · Contents: 500 g · VPE: 1 pcs.



WK GEL SUPERGLUE



WK GEL for plastic, rubber and metal; high gap filling ability, highly viscous; can be used on vertical surfaces. Special dosing tip allows precise application. Product stability through new active ingredient.

Item No.: WK GEL-020 · Contents: 20 g · VPE: 20 pcs.



WK 30-S REPAIR SET



WK 10 filler is used in conjunction with the cyanoacrylate-based WK 30 for constructional adhesion. The set is ideally suited to filling and bridging gaps and cracks. After hardening, further processing such as sawing, milling, drilling and grinding is possible.

Item No.: WK 30-S · Contents: 50/30 g · VPE: 8 pcs.



WK 7 PRIMER



Changing the surface structure by applying WK 7 results in better cyanoacrylate-based adhesion of plastics to polyolefin, silicone and PTFE. Ideal as a pre-treatment for materials that are difficult to glue or where special adhesion is required.

Item No.: WK 7-010 · Contents: 10 g · VPE: 30 pcs.



WK 9 CA ACTIVATOR



The modular CA activator accelerates the polymerisation of all WEKEM cyanoacrylate-based adhesives. Initial strength after 2-3 seconds. Prevents the efflorescence of adhesives. Any excess adhesive material is bonded by spraying.

Item No.: WK 9-200 · Contents: 200 ml · VPE: 12 pcs.

Item No.: WK 9-500 · Contents: 500 ml · VPE: 10 pcs.



WEKEM

CA adhesives Are also available in Blister packs

- The product is visible in transparent blister packaging
- Euro perforations for easy use and clear presentation on the shop shelf
- Communication area and high-quality design due to printable Blister
- Authenticity protection avoids manipulation
- Additional protection against external influences



WEKEM

MS Polymer

- Fast adhesion
- Fast-hardening
- Weatherproof
- Can Be painted over



MS POLYMER ADHESIVES AND SEALANTS

Product advantages:

- very strong initial adhesion, can be painted over
- for interior and exterior use, in all weather conditions
- fast hardening, even at low temperatures
- isocyanate and silicon-free
- excellent adhesion to most (even wet) surfaces
- virtually odourless, colourfast, weatherproof
- permanently elastic and resistant to ageing after hardening

WK 120 MULTIFLEX BLACK



WK 120 is a single component MS polymer adhesive and sealant. It has been developed especially for the bonding and sealing of different materials, for example, steel, stainless steel, aluminium, zinc, most plastics, Styrofoam, wood, parquet floors, chipboard, gypsum, marble and natural stone. Ideal for bodywork, and sealing and protecting sheet metal connections against rust and corrosion.

Colour: black

Item No.: WK 120-300 · Contents: 290 ml · VPE: 12 pcs.



WK 121 MULTIFLEX WHITE



WK 121 is a high quality isocyanate and silicone-free, single component, MS polymer-based adhesive and sealant. For the adhesion of most materials and polystyrene. Modern all-round material for professional artisans. Flexible, fast, safe for interior and exterior use.

Colour: white

Item No.: WK 121-300 · Contents: 290 ml · VPE: 12 pcs.

Item No.: WK 121-600 · Contents: 600 ml · VPE: 12 pcs.



WK 122 MULTIFLEX GREY



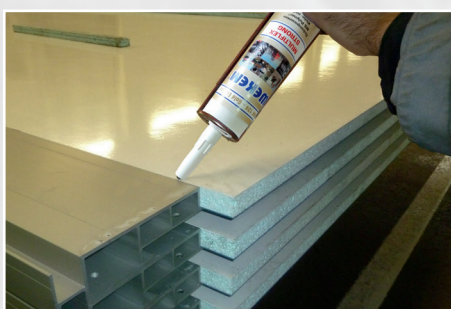
WK 122 is a strong, single component, MS polymer-based adhesive. It hardens with very little shrinkage and can be painted over (wet on wet). The product has excellent ageing resistance and is free of isocyanates. Flexible application, permanently elastic, strongly adhesive, with broadband spectrum.

Colour: grey

Item No.: WK 122-300 · Contents: 290 ml · VPE: 12 pcs.



WK 124 MULTIFLEX STRONG



The adhesive hammer for professionals! Highest initial adhesion on almost all surfaces. Flexible, safe, fast. WK 124 is a one-component adhesive based on MS polymer technology. It has been developed especially for the bonding and sealing of different materials, for example, steel, stainless steel, aluminium, zinc, most plastics, Styrofoam, wood, parquet floors, chipboard, gypsum, marble and natural stone.

Colour: white

Item No.: WK 124-300 · Contents: 290 ml · VPE: 12 pcs.



WK 126 MULTIFLEX CLEAR



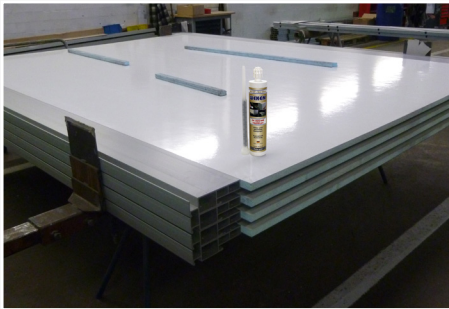
For transparent adhesive bonding in visible areas. WK 126 has been developed especially for the bonding and sealing of different materials, e.g. steel, stainless steel, aluminium, zinc, most plastics, Styrofoam, wood, parquet floors, chipboard, gypsum, marble and natural stone. Adhesive even under extreme conditions, and on wet surfaces. Wet-on-wet paintable.

Colour: transparent

Item No.: WK 126-300 · Contents: 290 ml · VPE: 12 pcs.



WK 127 2K DUO MS FASTFLEX



WK 127 is a high quality two-component adhesive and sealant which is based on new hybrid technology. The adhesive hardens into a permanent elastic mass, without absorbing moisture.

Colour: grey

Item No.: WK 127-300 · Contents: 280 ml · VPE: 12 pcs.



WK 128 MULTIFLEX BEIGE



WK 128 is a single component MS polymer adhesive and sealant. It has been developed especially for the bonding and sealing of different materials, for example, steel, stainless steel, aluminium, zinc, most plastics, Styrofoam, wood, parquet floors, chipboard, gypsum, marble and natural stone. Ideal for bodywork, and sealing and protecting sheet metal connections against rust and corrosion.

Colour: beige

Item No.: WK 128-300 · Contents: 290 ml · VPE: 12 pcs.



WS 118 ULTRA CLEAR



For visible glass and mirror adhesion. WS 118 can be painted over with all water-based paints. For interior and exterior use – in all weather conditions. Fast hardening even at low temperatures. No blistering on porous surfaces. Does not contain isocyanate or silicone. Excellent adhesion to most (even wet) surfaces. Primerless application in most areas of use.

Colour: transparent

Item No.: WS 118-300 · Contents: 290 ml · VPE: 12 pcs



WS 128 ULTRA BOND BLACK



The universal adhesive in the exterior and construction sector. For joints, expansion joints, metal constructions, plumbing work. WS 128 is suitable for interior and exterior use – in all weather conditions. Fast hardening even at low temperatures. Isocyanate and silicone-free. Excellent adhesion to most (even wet) surfaces. Rapid hardening, virtually odourless, colourfast, weatherproof. Permanently elastic and resistant to ageing after hardening.

Colour: black

Item No.: WS 128-300 · Contents: 290 ml · VPE: 12 pcs.



WK 162 MULTIFLEX GREY, SPRAYABLE



WK 162 is a high quality, professional, universally applicable adhesive and sealant with unique adhesion properties, based on MS polymer technology. After application, the material hardens to form a durable rubber seal.

Colour: grey

Item No.: WK 162-300 · Contents: 290 ml · VPE: 12 pcs.



WK 170 BODY ADHESIVE AND SEALANT



WK 170 is a paintable adhesive and sealant. It has been especially developed for car body construction. Very good adhesion – even without primer – on clean, grease-free and dry surfaces made of aluminium, galvanised steel, stainless steel, brass, copper, zinc, bare, primed or painted metal surfaces, concrete, ceramics, rubber, PVC, glass, polyester (GVK).

Colour: black

Item No.: WK 170-300 · Contents: 290 ml · VPE: 12 pcs.



WK 171 BODY ADHESIVE AND SEALANT



WK 171 is a paintable adhesive and sealant. It has been especially developed for car body construction. Very good adhesion – even without primer – on clean, grease-free and dry surfaces made of aluminium, galvanised steel, stainless steel, brass, copper, zinc, bare, primed or painted metal surfaces, concrete, ceramics, rubber, PVC, glass, polyester (GVK).

Colour: white

Item No.: WK 171-300 · Contents: 290 ml · VPE: 12 pcs.



WK 172 BODY ADHESIVE AND SEALANT



WK 172 is a paintable adhesive and sealant. It has been especially developed for car body construction. Very good adhesion – even without primer – on clean, grease-free and dry surfaces made of aluminium, galvanised steel, stainless steel, brass, copper, zinc, bare, primed or painted metal surfaces, concrete, ceramics, rubber, PVC, glass, polyester (GVK).

Colour: grey

Item No.: WK 172-300 · Contents: 290 ml · VPE: 12 pcs.



WEKEM

POLYURETHANE

- Strongly adhesive
- Can be ground
- Weatherproof
- Can be paint over



POLYURETHANE ADHESIVES AND SEALANTS

WEKEM polyurethane adhesives suitable for professional bonding and sealing techniques. The balanced formula provides secure adhesion and allows constructional connections in vehicle, ship, metal and container construction.

Suitable for internal and external sealing. Fast and secure operation.

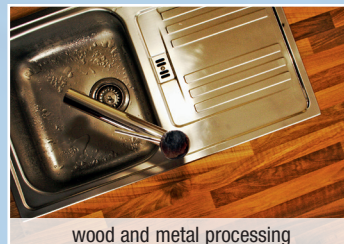
Ideal for professional use in trade, industry and metal work.



Vehicle body adhesive



window adhesive



wood and metal processing

WK 50 1 K-POLYURETHANE ADHESIVE BLACK



High PU adhesive with medium Shore hardness for bonding, attaching, sealing of metal surfaces, stone, ceramics, concrete. Weather-resistant, suitable for indoor and outdoor use. Can be used in automotive, steel and container construction, and as a bodywork adhesive. Fast, secure, with high adhesive strength. For repair and maintenance.

Colour: black

Item No.: WK 50-300 · Contents: 310 ml · VPE: 12 pcs.



WK 51 1 K-POLYURETHANE ADHESIVE WHITE



High PU adhesive with medium Shore hardness for bonding, attaching, sealing of metal surfaces, stone, ceramics, concrete. Weather-resistant, suitable for indoor and outdoor use. Can be used in automotive, steel and container construction, and as a bodywork adhesive. Fast, secure, with high adhesive strength. For repair and maintenance.

Colour: white

Item No.: WK 51-300 · Contents: 310 ml · VPE: 12 pcs.



WK 52 1 K-POLYURETHANE ADHESIVE GREY



High PU adhesive with medium Shore hardness for bonding, attaching, sealing of metal surfaces, stone, ceramics, concrete. Weather-resistant, suitable for indoor and outdoor use. Can be used in automotive, steel and container construction, and as a bodywork adhesive. Fast, secure, with high adhesive strength. For repair and maintenance.

Colour: grey

Item No.: WK 52-300 · Contents: 310 ml · VPE: 12 pcs.



WK 55 2 K-POLYURETHANE ADHESIVE

WK 55 is an extremely high-strength 2 K-PU adhesive for bonding and corrections. For use in industry, trade and motor vehicles. Resistant to water, oil, fuel, solvents, acids and alkalis. Mixing ratio 1:1. Fixing time: 3-5 minutes. Post-processing by grinding, drilling and tapping is possible after approx. 20-30 minutes. Can be recoated after approx. 60 minutes. For bonding and repairs on plastic wheel wells, spoilers, wheel arches, bumper angles, trims, dashboards, handles, cladding, etc.

Colour: grey

Item No.: WK 55-050 · Contents: 50 ml · VPE: 6 pcs.

**WK 57 2 K DUO PURFLEX**

WK 57 is a polyurethane-based, two-component adhesive and sealant, which is designed especially for use on many different surfaces without primer. This high-performance adhesive is suitable for the permanent and extremely durable bonding of different plastics. The adhesive also enables high-strength structural connections of glass, metal, cathodic dip-paint coated sheet metal, aluminium, concrete and wood.

Colour: cream-white

Item No.: WK 57-050 · Contents: 50 ml · VPE: 6 pcs.

Item No.: WK 57-300 · Contents: 250 ml · VPE: 12 pcs.

Item No.: WK 57-400 · Contents: 400 ml · VPE: 6 pcs.

**TYPICAL AREAS OF APPLICATION:**

Metalworking; tank and apparatus construction; insulation and isolation technology; ventilation and air conditioning; vehicle bodywork, container, wagon and vehicle construction; yacht and ship building; the energy, electrical and lighting industry; and where silicone-containing products are either unsuitable or undesirable.

Any questions? Call us on +49 (0) 23 89 - 40 30 10, or e-mail us at: vertrieb@wekem.de

WEKEM

- HT silicone
- Plumbing silicone
- RTV Silicone for industry and trade

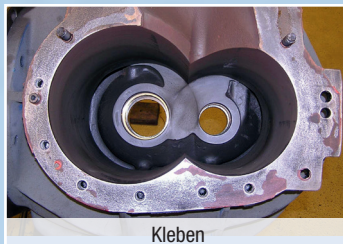


KLEB- UND DICHSTOFFE SILIKONE

WEKEM Hochtemperatur (HT) Silikone sind einkomponentige Spezial Kleb- und Dichtstoffe. Sie zeichnen sich durch hohe Standsicherheit und Stabilität aus. Die moderne Wirkstoffkombination ermöglicht sichere Haftung und Abdichtung im Hochtemperaturbereich sowie unter normalen Belastungen. Sie können mittels Auftragegerät oder direkt aus der Kartusche dosiert werden.



Dichten



Kleben



Temperaturbeständig

WK 138 HT-SILIKON TRANSPARENT PRESSPACK



WK 138 ist ein witterungsbeständiges, dauerelastisches HT-Silikon mit extremer Haftung auf Stahl, Aluminium, Keramik, Glas, Kunststoffen, Holz und anderen Werkstoffen. Ideal zur Abdichtung von Motorengehäusen, Getriebe-, Ventil- und Gehäusedeckeln, Ölwanne, Ölpumpen, Wasserpumpen, Heizungsanlagen, Industrie- und Kachelöfen, Abgasführungen, Klimaanlage. Leichte Verarbeitung ohne zusätzliche Kartuschenpistole.

Temperaturbeständig von -50 °C bis +180 °C.

Farbe: transparent

Artikel-Nr.: WK 138-200 · Inhalt: 200 ml · VPE: 12 St.



WK 148 HT-SILIKON BLACK



Dauerelastisches Hochtemperatursilikon für den schnellen Einsatz vor Ort. Die handliche Tube reicht in den meisten Fällen für den einmaligen Einsatz aus.

Vorteilspackung für die schnelle Montage vor Ort.

Temperaturbeständig von -50 °C bis +250 °C.

Farbe: schwarz

Artikel-Nr.: WK 148-080T · Inhalt: 80 ml · VPE: 20 St.



WK 148 HT-SILIKON BLACK PRESSPACK



WK 148 ist ein witterungsbeständiges, dauerelastisches HT-Silikon mit extremer Haftung auf Edelstahl, Aluminium, Keramik, Glas, lackiertem Holz und anderen Werkstoffen. Ideal zur Abdichtung von Motorengehäusen, Getriebe-, Ventil- und Gehäusedeckeln, Ölwanne, Ölpumpen, Wasserpumpen, Heizungsanlagen, Industrie- und Kachelöfen, Abgasführungen, Klimaanlage. Leichte Verarbeitung ohne zusätzliche Kartuschenpistole.

Temperaturbeständig von -50 °C bis +250 °C.

Farbe: schwarz

Artikel-Nr.: WK 148-200 · Inhalt: 200 ml · VPE: 12 St.



WK 148 HT-SILIKON BLACK



WK 148 wurde speziell für den Einsatz im Hochtemperaturbereich entwickelt. Es ersetzt die meisten Feststoffdichtungen und ist auf Grund seiner Beschaffenheit ideal für den Einsatz an Motoren, Getrieben, Pumpen und temperaturbeanspruchten Teilen.

Temperaturbeständig von -50 °C bis +250 °C.

Farbe: schwarz

Artikel-Nr.: WK 148-300 · Inhalt: 310 ml · VPE: 12 St.



WK 158 HT-SILIKON RED



Rotes dauerelastisches Hochtemperatursilikon für den schnellen Einsatz vor Ort. Die handliche Tube reicht in den meisten Fällen für den einmaligen Einsatz aus, bei größeren Verklebungen sind andere Gebinde verfügbar. Auch als Permanentdichtung verwendbar.

Temperaturbeständig von -60 °C bis +260 °C, kurzzeitig bis +300 °C

Farbe: rot

Artikel-Nr.: WK 158-080T · Inhalt: 80 ml · VPE: 20 St.



WK 158 HT-SILIKON RED PRESSPACK



WK 158 in der speziellen Presspack Kartusche. Durch leichten Druck auf den Betätigungshebel ist ein gleichmäßiger Auftrag auch an schwer zugänglichen Stellen möglich. Das Produkt haftet auf Aluminium, Edelstahl, Glas, Glasgewebe, Keramik und lackiertem Holz. Als Motoren- und Gehäusedichtung erprobt! Leichte Verarbeitung ohne zusätzliche Kartuschenpistole.

Temperaturbeständig von -60 °C bis +260 °C, kurzzeitig bis +300 °C

Farbe: rot

Artikel-Nr.: WK 158-200 · Inhalt: 200 ml · VPE: 12 St.



WK 158 HT-SILIKON RED



WK 158 ist ein witterungsbeständiges, dauerelastisches HT-Silikon mit extremer Haftung auf Edelstahl, Aluminium, Keramik, Glas, lackiertem Holz und anderen Werkstoffen. Ideal zur Abdichtung von Motorengehäusen, Getriebe-, Ventil- und Gehäusedeckeln, Ölwanne, Ölpumpen, Wasserpumpen, Heizungsanlagen, Industrie- und Kachelöfen, Abgasführungen, Klimaanlage.

Temperaturbeständig von -60 °C bis +260 °C, kurzzeitig bis +300 °C

Farbe: rot

Artikel-Nr.: WK 158-300 · Inhalt: 310 ml · VPE: 12 St.



WEKEM Silikone werden für dauerelastische Verklebungen, Beschichtungen, Isolierungen, Imprägnierungen, etc. eingesetzt. Eine superschnelle Vernetzung ermöglicht den Einsatz in Produktion, Instandhaltung, Reparatur und Konstruktion. Für schnelle Montagen und Reparaturarbeiten bestens geeignet.

Noch Fragen? Rufen Sie uns an unter Telefon 0 23 89 - 40 30 10 oder schreiben Sie uns eine E-Mail: vertrieb@wekem.de

WK 221 FLEX PLUMBING SILICONE WHITE



WK 221 is a versatile sealant for kitchens and bathrooms, windows, glass, industrial and vehicle construction; acetate interlinked; strongly adhesive, contains fungicide; permanently elastic and resistant to ageing both internally and externally.

Colour: white

Item No.: WK 221-300 · Contents: 310 ml · VPE: 12 pcs.



WK 222 FLEX PLUMBING SILICONE GREY



WK 222 is a versatile sealant for kitchens and bathrooms, windows, glass, industrial and vehicle construction; acetate interlinked; strongly adhesive, contains fungicide; permanently elastic and resistant to ageing both internally and externally.

Colour: grey

Item No.: WK 222-300 · Contents: 310 ml · VPE: 12 pcs.



WK 226 FLEX PLUMBING SILICONE TRANSPARENT



WK 226 is a versatile sealant for kitchens and bathrooms, windows, glass, industrial and vehicle construction; acetate interlinked; strongly adhesive, contains fungicide; permanently elastic and resistant to ageing both internally and externally.

Colour: transparent

Item No.: WK 226-300 · Contents: 310 ml · VPE: 12 pcs.



WK 321 SUPERFLEX RTV SILICONE WHITE



WK 321 is extremely versatile. Bonds and seals many industrial, construction, glass, metal and plumbing materials. Acid-free and odourless, permanently elastic and ageing resistant, for indoor and outdoor use, excellent adhesion.

Colour: white

Item No.: WK 321-300 · Contents: 310 ml · VPE: 12 pcs.



WK 322 SUPERFLEX RTV SILICONE GREY



WK 322 is extremely versatile. Bonds and seals many industrial, construction, glass, metal and plumbing materials. Acid-free and odourless, permanently elastic and ageing resistant, for indoor and outdoor use, excellent adhesion.

Colour: grey

Item No.: WK 322-300 · Contents: 310 ml · VPE: 12 pcs.



WK 326 SUPERFLEX RTV SILICONE TRANSPARENT



WK 326 is extremely versatile. Bonds and seals many industrial, construction, glass, metal and plumbing materials. Acid-free and odourless, permanently elastic and ageing resistant, for indoor and outdoor use, excellent adhesion.

Colour: transparent



Item No.: WK 326-300 · Contents: 310 ml · VPE: 12 pcs.

SILICONE

WEKEM silicone is used for permanent elastic bonding, coatings, insulation, waterproofing, etc. A super-fast connection enables use in production, maintenance, repair and construction. Best suited to quick assembly and repair work.

Any questions? Call us on +49 (0) 23 89 - 40 30 10, or e-mail us at: vertrieb@wekem.de

WEKEM

2 - C ADHESIVES

- High-strength adhesion
- Easy to dose, using a dual cartridge system
- For gluing, repairing, filling, and bonding



ADHESIVES AND SEALANTS

2 K ADHESIVES

Professional 2 K adhesive for high-strength joins. Resistant to chemical and mechanical stress. For gluing, repairing, filling and bonding. Easy to dose using a dual cartridge system, in conjunction with a mixing nozzle and dosing pistol. See pages 52 and 54 for a selection.

For optimal adhesive selection, various adhesive types are available. They differ in terms of material and hardening time. You have a choice between rapidly and slowly hardening products.



Housing repairs



highly adhesive, fast bonding



technical special connections

WS 360 COLD METAL



2-component epoxy metal. This steel-filled glue has an extremely high adhesive force. It hardens quickly and is easy to apply, even on vertical surfaces. WS 360 is ideal for sealing and filling cracks, holes and leakages on machine parts, tanks, vessels, pumps, housing, etc. This special repair mass is immensely versatile in industry, trade and technology.

Item No.: WS 360-056 · Contents: 56 g · VPE: 24 pcs.

Item No.: WS 360-120 · Contents: 115 g · VPE: 12 pcs.



WS 362 2 K LIQUID METAL



Epoxy-based, hardens quickly. For repairing steel and cast iron parts. Fills cracks, holes and cavities. The hardened adhesive can be mechanically processed in a short time.

Approval by  under Tox. No. 176773

Item No.: WS 362-025 · Contents: 24 ml · VPE: 6 pcs. / 20 pcs.



WK 5 – FIVE MINUTE EPOXY



For high-strength joins. For bonding metals, ceramics, wood, etc. Fast hardening.

Item No.: WK 5-025 · Contents: 24 ml · VPE: 15 pcs.

Item No.: WK 5-050 · Contents: 50 ml · VPE: 6 pcs.



WS 364 MULTI-PLAST



WS 364 is a highly efficient, 2 component, methyl acrylate-based adhesive which is used for connecting different materials. The fast-curing adhesive is extremely shock-proof and peel-proof and can be processed in any manner. WS 364 is solvent and moisture-resistant. Essential for repair and maintenance. APPLICATION: Aluminium, steel, stainless steel, metals, plastics, thermoplastics, acrylic (PMMA), PVC, FRP, PC, PET, PBT, PU, epoxies and composite materials, etc. Plastics are as welded.

Item No.: WS 364-025 · Contents: 24 ml · VPE: 20 pcs.

Item No.: WS 364-050W · Contents: 50 ml · VPE: 6 pcs.



WK 55 2 K-POLYURETHANE ADHESIVE



WK 55 is an extremely high-strength 2 K-PU adhesive for bonding and corrections. For use in industry, trade and motor vehicles. Resistant to water, oil, fuel, solvents, acids and alkalis. Mixing ratio 1:1. Fixing time: 3-5 minutes. Post-processing by grinding, drilling and tapping is possible after approx. 20-30 minutes. Can be recoated after approx. 60 minutes. For bonding and repairs on plastic wheel wells, spoilers, wheel arches, bumper angles, trims, dashboards, handles, cladding, etc.

Item No.: WK 55-050 · Contents: 50 ml · VPE: 6 pcs.



WK 57 2 K DUO PURFLEX



WK 57 is a polyurethane-based, two-component adhesive and sealant, which is designed especially for use on many different surfaces without primer. This high-performance adhesive is suitable for the permanent and extremely durable bonding of different plastics. The adhesive also enables high-strength structural connections of glass, metal, cathodic dip-paint coated sheet metal, aluminium, concrete and wood.

Colour: cream-white

Item No.: WK 57-050 · Contents: 50 ml · VPE: 6 pcs.

Item No.: WK 57-300 · Contents: 250 ml · VPE: 12 pcs.

Item No.: WK 57-400 · Contents: 400 ml · VPE: 6 pcs.



WK 127 2K DUO MS FASTFLEX



WK 127 is a high quality two-component adhesive and sealant which is based on new hybrid technology. The adhesive hardens into a permanent elastic mass, without absorbing moisture.

Colour: grey

Item No.: WK 127-300 · Contents: 280 ml · VPE: 12 pcs.

WEKEM

Technical accessories

- Safe operation
- Precise dosing
- Proven to be useful for thousands of applications

ACCESSORIES



TECHNICAL EQUIPMENT FOR MAINTENANCE AND REPAIRS

We offer an extensive selection of technical equipment, which completes the range of WEKEN products. WEKEM accessories are characterised by functional and safe processing. Proven to be useful for thousands of applications.

WS 14 MANUAL GUN PLASTIC



Hand gun made of sturdy plastic. For all WEKEN 2 K epoxy adhesives which are processed by means of a drip or mixer. Advantage: The ejection pistons are automatically released after dosing, and dripping of the adhesive is avoided.



Item No.: WS 14 · VPE: 1 pcs.

WS 15 MANUAL GUN METAL



WS 15 handgun (metal) for highly viscous 2 K methacrylate and 2 K PU adhesives. Advantage: The robust construction of this version produces an increased squeezing pressure, so that thick or viscous products can be easily dosed.

For private labels, other colours are available on the request of the customer!



Item No.: WS 15 · VPE: 1 pcs.

WS 25 POWER GUN



WS 25 handgun (metal/plastic combination) for highly viscous 2 adhesives. Advantage: The robust construction of this version produces an increased squeezing pressure. Viscous or highly viscous products are easy to measure.

Suitable for 50 ml double cartridges.



Item No.: WS 25 · VPE: 1 pcs.

WS 12 HANDSPRAYER



Refillable spray device for liquids. Ideal in small amounts. The spray intensity can be adjusted accordingly. Not suitable for aggressive media. Recommended for WS 2500, WS 2800 and WS 2900.



Item No.: WS 12 · Contents: 500 ml · VPE: 1 pcs.

WS 6 PROFI PRESSURE PUMP VAPORISER



WS 6 is for aggressive solvents, e.g. acetone. Simply fill with product, inflate the container. Product emission can be altered using an adjustable nozzle.

A separate sealing kit is available for this model!

Bootle: PP
Seal: EPDM
Nozzle: PP 0,8 mm
Spring: V4A 1.4571

Item No.: WS 6 · Contents: 1 l · VPE: 1 pcs.



WS 7 PROFI PRESSURE PUMP VAPORISER



WS 7 is the new generation of pressure pump vaporisers. With the innovative 360° spray function, the WS 7 can also be easily used for "overhead spraying". The 1.5 litre capacity guarantees a high output in any position. Even parts of machines, vehicles, etc., which are difficult to access can be easily reached. Due to its highly durable and flexible Viton hose, WS 7 is also suitable for aggressive media. Product emission can be altered using an adjustable nozzle.

A separate sealing kit is available for this model!

For data, see WS-8

Item No.: WS 7 · Contents: 1.5 l · VPE: 1 pcs.



WS 8 PROFI PRESSURE PUMP VAPORISER



WS 8 is a pressure sprayer for many aggressive solvent-based liquids, such as brake cleaner or alkaline cleaners, etc. (not suitable for acetone). Simply fill with product, and build up the pressure with the pump. Product emission can be altered using an adjustable nozzle.

A separate sealing kit is available for this model!

Bootle: PA
Seal: FKM
Nozzle: MS 0,8 mm
Spring: V4A 1.4571

Item No.: WS 8 · Contents: 1 l · VPE: 1 pcs.



WS 9 PROFI PRESSURE PUMP VAPORISER



WS 9 is a pump action for solvent-based products such as WS 1000, WS 2000 and WS 2200. Simply fill with product, and build up the pressure with the pump. Product emission can be altered using an adjustable nozzle.

A separate sealing kit is available for this model!

Bootle: PP
Seal: NBR
Nozzle: MS 0,8 mm
Spring: V4A 1.4571

Item No.: WS 9 · Contents: 1 l · VPE: 1 pcs.



WS 10 PROFI PRESSURE PUMP VAPORISER



Technically high-quality dosing with Viton sealing for spraying liquid agents and cleaning solutions. Especially suitable for WS 2500, WS 2800 and WS 2900. Easy to use. Fill with product, inflate container. Product emission can be altered using an adjustable nozzle.

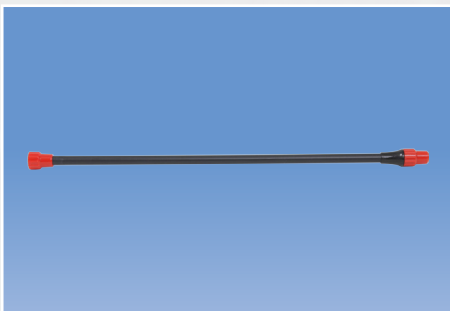
A separate sealing kit is available for this model!

Bootle: PP
Seal: FKM
Nozzle: PP 0,8 mm
Spring: V4A 1.4571

Item No.: WS 10 · Contents: 1 l · VPE: 1 pcs.



WS 11 EXTENSION

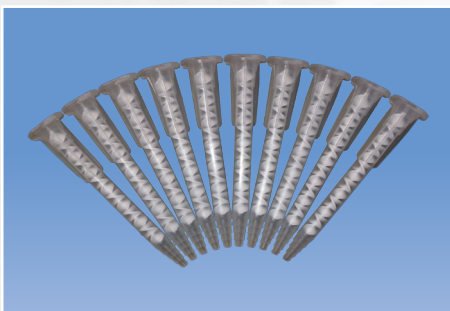


Professional dose metering cap for all pressure pump vaporisers. Through the use of the extension, product application in awkward places is possible.

Item No.: WS 11 · VPE: 1 pcs.



MD STATIC MIXER



Dosage mixer for 2-component cartridges. Recommended for WS 364. The discharged amount of glue is variably dosed by shortening the mixing nozzle. Fits onto many commercial 2K cartridges by various manufacturers, by means of a bayonet connector. Please take mixing ratios into account.

Also available as a WS 16 set!

Item No.: MD · VPE: 1 pcs.
Item No.: WS 16 · VPE: 1 (contents: 10 pcs.)



QM QUADRO MIXER 83 MM



QM is a quadro mixer nozzle, which is ideal for 2 K adhesives. The special coils guarantee excellent, uniform mixing of the adhesives. Recommended for WS 364. The honeycomb structure is constructed so that the adhesive is mixed four times on the shortest route. This longer mixing distance increases product safety.

Also available as a WS 17 set!

Item No.: QM 83 · VPE: 1
Item No.: WS 17 · VPE: 1 (contents: 10 pcs.)



QMB QUADRO MIXER 83 MM B SYSTEM



QMB is a quadro mixer nozzle, which is ideal for 2-component adhesives. The special coils guarantee excellent, uniform mixing of the adhesives. Recommended for WK 55. The honeycomb structure is constructed so that the adhesive is mixed four times on the shortest route. This longer mixing distance increases product safety.

Also available as a WS 17-B set!

Item No.: QMB 83 · VPE: 1
Item No.: WS 17-B · VPE: 1 (contents: 10 pcs.)



QM QUADRO MIXER 143 MM



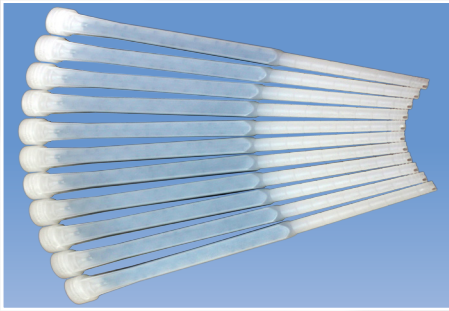
Static mixer for processing two-component adhesives in 250 ml coaxial cartridges (WK 57 u. WK 127), and 400 ml double cartridges (WK 57).

Also available as a WS 19-1 set!

Item No.: QM 143 · VPE: 1
Item No.: WS 19-1 · VPE: 1 (contents: 10 pcs.)



QM QUADRO MIXER 255 MM



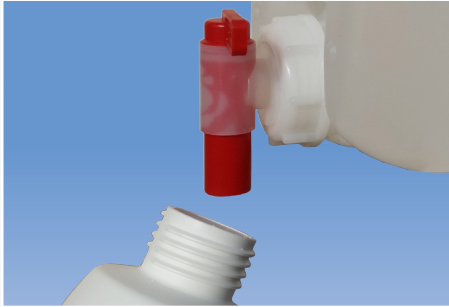
Static mixer for processing 2-component adhesives in 250 ml coaxial cartridges (WK 57 and WK 127).

Also available as a WS 19 set!

Item No.: QM 255 · VPE: 1
Item No.: WS 19 · VPE: 1 (contents: 10 pcs.)



WZ 2-45 PLASTIC OUTLET NOZZLE



Universal outlet nozzle for plastic canisters with DIN 45 connection thread. Simple mounting by screwing. Reusable.

Item No.: WS 2-45 · VPE: 1 pcs.



WZ 2-51 PLASTIC OUTLET NOZZLE



Universal outlet nozzle for plastic canisters with DIN 51 connection thread. Simple mounting by screwing. Reusable.

Item No.: WS 2-51 · VPE: 1 pcs.



WZ 48 REPAIR TAPE



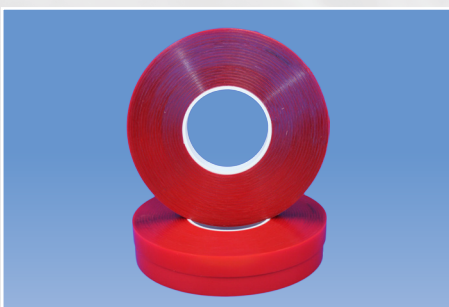
Self-sealing insulating and repair tape for use in the motor vehicles and industrial sectors. Protects metals against corrosion. Damage to electrical cables and other areas of repair can therefore be permanently protected against moisture and oxidation. Small repairs can be carried out immediately.

A must for any toolbox!

Item No.: WS 48 · VPE: 20 rolls (5 m per roll)



WZ 49 ACRYLIC FOAM TAPE

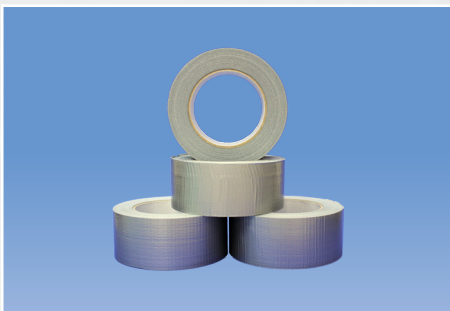


Acrylic foam tape for high performance, and ageing and weathering resistance. Extreme adhesion to many materials.
0.5 x 19 mm, transparent

Item No.: WS 49 · VPE: 20 rolls (33 m per roll)

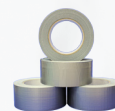


WZ 58 FABRIC TAPE



PE-coated (synthetic) fabric tape with synthetic rubber glue, silver 50 mm x 50 m

Item No.: WZ-58 · VPE: 24 rolls



HC 75 HAND-CLEANING CLOTHS



HC 75 hand-cleaning cloths are designed for use in industry, trade, during assembly, for servicing vehicles, etc. These 2-layer wipes remove grease, oils, lubricants, paints, adhesives, and more from the hands and water-compatible surfaces. HC 75 hand wipes save the usual cleaning agents, and can be used at any time without water. The 2-layer wipes have a rough side for deep cleaning, and a smooth side for rinsing.

Item No.: HC 75 · Contents: 75 cloths · VPE: 10 pcs.



FAST ORANGE®



The hand cleanser is biodegradable and free of mineral solvents and water. It does not contain any abrasive chemicals or ammonia. Pure orange zest extracts provide a high-quality, natural and fragrant cleaning power. Fine pumice for thorough cleaning. Aloe vera, lanolin, glycerine and jojoba care for the skin. Fast Orange® hand cleaner is also perfect for use on textiles, flooring and several other cleaning purposes.

Item No.: FO-400 bottle · Contents: 443 ml · VPE: 6 pcs.



FAST ORANGE®



The hand cleanser is biodegradable and free of mineral solvents and water. It does not contain any abrasive chemicals or ammonia. Pure orange zest extracts provide a high-quality, natural and fragrant cleaning power. Fine pumice for thorough cleaning. Aloe vera, lanolin, glycerine and jojoba care for the skin. Fast Orange® hand cleaner is also perfect for use on textiles, flooring and several other cleaning purposes.

Item No.: FO-4000 canister · Contents: 3.785 l · VPE: 4 pcs.



FAST ORANGE®



Wall bracket for Fast Orange® hand cleaner FO-4000

Item No.: WZ-FO-4000- VPE: 1 pcs.



WZ 4000 MULTI FLOCKE



WZ 4000 is a highly effective liquid binder. It can absorb and combine oil, water, chemicals, acids, petrol, adhesives, paint, etc., very quickly and without residue. (not suitable for hydrogen fluoride and mercury).

Item No.: WZ-4000-5 · Contents: 5 l · VPE: 8 pcs.



WK 11 ACTIVATOR FOR ANAEROBIC ADHESIVES



Innovative, improved combination of active substances for hardening anaerobic adhesives. Ideal for passive materials (such as aluminium, galvanised surfaces, chrome, etc.). Fast and safe hardening at low temperatures (<15 °C).

Item No.: WK 11-200 · Contents: 200 ml · VPE: 12 pcs.

Item No.: WK 11-500 · Contents: 500 ml · VPE: 10 pcs.



WK 700 SAFETY LACQUER



WK 700 is a locking compound which detects unauthorised interferences. Suitable for fittings, bolts, nuts, and housing attachments. Good adhesion, no corrosion.

Colour: yellow

Item No.: WK 700-050 · Contents: 50 g · VPE: 50 pcs.



WK 701 SAFETY LACQUER



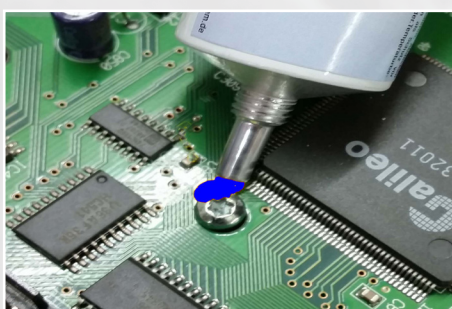
WK 701 is a locking compound which detects unauthorised interferences. Suitable for fittings, bolts, nuts, and housing attachments. Good adhesion, no corrosion.

Colour: red

Item No.: WK 701-050 · Contents: 50 g · VPE: 50 pcs.



WK 702 SAFETY LACQUER



WK 702 is a locking compound which detects unauthorised interferences. Suitable for fittings, bolts, nuts, and housing attachments. Good adhesion, no corrosion.

Colour: blue

Item No.: WK 702-050 · Contents: 50 g · VPE: 50 pcs.



WEKEM

WK-Flon

- Long-term stability
- Temperature resistant
- Reliable
- Quick and clean



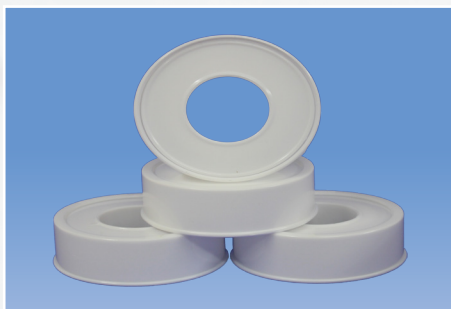
WK-FLON

Thanks to its particular performance characteristics, polytetrafluoroethylene (PTFE) is known around the world as an excellent thread sealant for reliable and secure connections. For decades, PTFE products have been successfully used for this.

Due to its long-term resistance to water, gases, oils and several chemicals, the raw material PTFE is ideally suited to industrial thread sealing. This is combined with a tremendous temperature stability ranging from -240 °C to + 260 °C.

WEKEM thread sealing tapes made of 100% PTFE ensure a reliable seal, even for unusual requirements. Quick and clean. Accordingly, many of our tapes are subject to various approvals.

GD THREAD SEALING TAPE



Standard PTFE thread sealing tape, unsintered.

0.08 x 12 mm x 12 m Item No.: GD-12-12 · VPE: 10 / 250 rolls

0.08 x 19 mm x 12 m Item No.: GD-19-12 · VPE: 10 / 175 rolls

0.08 x 25 mm x 12 m Item No.: GD-25-12 · VPE: 10 / 125 rolls

FRP THREAD SEALING TAPE



DVGW tested PTFE thread sealing tape for gas and water pipes, pursuant to DIN EN 751-3, for fine threads.

12 mm x 12 m · Item No.: FRP-12-12 · VPE: 10 / 250 castors

GRP THREAD SEALING TAPE



DVGW tested PTFE thread sealing tape for gas and water pipes, pursuant to DIN EN 751-3, for coarse threads.

12 mm x 12 m · Item No.: GRP-12-12 · VPE: 10 / 250 castors

GT GOLDEN TAPE



PTFE threaded sealing tape with increased density. It is used for sealing pipe connections and fittings and is resistant to aggressive media such as petrol, oil, propane, petroleum, kerosene and natural gas (pressure <300 psi).

0.10 x 12.7 mm x 12 m · Item No.: GT-12-12 · VPE: 10 / 250 castors

FB FLAT SEALING TAPE



Sealing tape made of 100% pure PTFE, in elongated fibre structure, TÜV, BAM and DVGW-tested, self-adhesive, on spools.

7 x 2.5 mm x 15 m · Item No.: FB-02-15 · VPE: 1 roll
 10 x 3.0 mm x 10 m · Item No.: FB-03-10 · VPE: 1 roll
 14 x 5.0 mm x 10 m · Item No.: FB-05-10 · VPE: 1 roll
 17 x 6.0 mm x 5 m · Item No.: FB-06-05 · VPE: 1 roll

WZ 55 THREAD SEALING TAPE



WZ 55 consists of 100% PTFE and is suitable for all metal or plastic threads. The sealing thread is resistant to almost all chemicals, oils and gases, and is also suitable for solar panels. A reverse twist of up to 45° has been approved. Temperature stability between -200 °C and +240 °C. Non-flammable and non-flammable.

175 m · Item No.: WZ-55 · VPE: 12 pcs.



CONTENTS

Aerosole

A

Aluminium spray	7
Anti Seize copper spray.....	13

B

Battery pole protec.....	11
Brake cleaner.....	13
Brass spray.....	8
Burner cleane	14

C

Ceramic spray	13
Chain and rope spray	9
Chrome-aluminium spay.....	7
Citrus industrial cleaner.....	14
Cockpit spray	6
Compressed air spray	15
Cooling spray	9
Copper spray.....	7
Corrosion protection wax	10

D

Drilling and cutting oil.....	5
-------------------------------	---

E

Electronics spray	4
-------------------------	---

F

Forklift paintwork, blood orange	11
Forklift paint, anthracite	11

G

Gear protection spray.....	11
----------------------------	----

H

High-pressure adhesive lubricant.....	10
---------------------------------------	----

L

Label remover.....	8
Leak detection spray	9

M

Maintenance set	12
Metal glide.....	10
Multinox stainless steel polish.....	8
Multi-purpose lubricating spray	5
Multi-purpose spray	4

P

Primer grey	11
Profi Power brake cleaner	14
Profi foam cleaner	15
Profi spray cleaner.....	14
Profi Dry chain spray	13
Profi gloss polish	13
Protective engine lacquer	10
PTFE Spray.....	5

R

Rally black	12
Rust remover	4
Rust converter & primer	5
Rust shock	4

CONTENTS

Aerosole

S

Service Set	12
Silicone spray	6
Special brake cleaner	14
Special rust remover with MoS2	4
Special spray adhesive.....	6
Spray adhesive.....	6
Stainless steel care spray.....	8
Stainless steel spray.....	8

T

Thermal gloss paint, Black	12
Thermal gloss paint, silver.....	12

W

Wedge and belt spray	5
Welding protection spray.....	9
White grease spray with PTFE	9
Window and glass cleaner	15

Z

Zinc-aluminium mix.....	7
Zinc dust repair spray.....	6
Zinc dust spray.....	7

Canisters & loose items

B

Brake cleaner	18
---------------------	----

C

Corrosion protection wax	18
--------------------------------	----

D

Drilling and cutting oil.....	17
-------------------------------	----

F

Forklift cleaner	20
------------------------	----

G

Gastronomy cleaner	20
--------------------------	----

L

Leak detector	18
---------------------	----

M

Multi-purpose oil	17
-------------------------	----

O

Oil neutraliser	19
-----------------------	----

P

Profi Assembly cleaner	19
Profi spray cleaner.....	19

S

Silicone oil	18
Special rust remover with MoS 2	17

T

Terrace and yard cleaner	19
--------------------------------	----

W

Window and glass cleaner	20
Workshop and machinery cleaner	19

Z

Zinc dust paint.....	18
----------------------	----

CONTENTS

Assembly paste

C

Copper Paste..... 24

Copper paste tube 24

H

HTC Ceramic paste 24

HTC Presspack..... 23

HTC Set..... 24

HTC tube 23

M

Metal Glide 23

Lubricants

B

Ball-bearing grease 27

Bio adhesive oil 26

C

Chain oil..... 26

D

Drilling and cutting oil..... 27

G

Graphite..... 26

L

Long-term/heavy duty grease 27

M

Multi-purpose grease 27

S

Sewing machine oil 27

Silicone grease 28

U

Universal lubricating oil 26

Universal oil 26

Cyanoacrylate adhesive

B

Blister packaging..... 35

C

CA Activator 34

P

Primer 34

R

Repair set 34

S

Superglue 29 - 33

Superglue gel 34

1 K Adhesives and sealants

M

MS Polymer 36 - 39

P

Polyurethane..... 40 - 42

S

Silicone..... 43 - 47

CONTENTS

2 K adhesive and sealants

C	
Cold metal	49
D	
Duo MS-Fastflex	50
Duo Purflex	50
F	
Five Minute Epoxy	49
L	
Liquid metal 2 K	49
M	
Multi-Plast	50
P	
Polyurethane adhesive	50

Technical equipment for maintenance and repair

A	
Acrylic foam tape	55
Anaerobic activator, plastic	57
E	
Extension of pressure pump vaporiser	54
F	
Fabric tape	56
Fast Orange	56
H	
Hand-cleaning cloths	56
Hand sprayer	52
L	
Locking varnish	57
M	
Metal hand pistol	52
Multi-flake	57
O	
Outlet nozzle, plastic	55
P	
Plastic hand pistol	52
Power gun	52
Profi compressed air sprayer	53
R	
Repair tape	55
S	
Static mixer	54 - 55

WK-Flon

F	
FB Flat sealing tape	60
FRp Thread sealing tape	59
G	
GD thread sealing tape	59
GRp thread sealing tape	59
GT Golden-Tape	60
T	
Thread sealing tape	60

GENERAL TERMS AND CONDITIONS OF BUSINESS

A) General terms and conditions

Section 1 General

1. Our terms and conditions of sale apply exclusively. We do not recognise any opposition to – or deviations from – our terms and conditions of sale on the part of the customer, unless we have expressly agreed this in writing. Our terms and conditions of sale also apply if we unreservedly make a delivery to the customer, despite being aware of opposition to – or deviations from – our terms and conditions of sale on the part of the customer.
2. All agreements made between us and the customer, relating to the conclusion of this contact, must be set out in writing.
3. Our terms and conditions of sale apply to contractors pursuant to Section 24 AGBG, as well as for all future transactions with the customer.

Section 2 Offer and contract conclusion

1. Our offer is non-binding unless the order confirmation clearly states otherwise. For specially-prepared offers, a period of thirty calendar days from the date of the offer shall apply.
2. If the order qualifies as an offer pursuant to Section 145 BGB, we can accept this within 14 calendar days by sending an order confirmation, or by delivering the ordered goods. When the deadline has passed, the offer shall be considered to be rejected. If we do not issue an order confirmation, our invoice will be recognised as a valid confirmation.
3. We retain the ownership and copyright of figures, diagrams, calculations and other documentation. This shall also be applicable to any written documents which are marked as “confidential”. Disclosure to third parties without our prior express written consent is prohibited. The documents may be returned, without retaining any copies, on request.

Section 3 Prices

1. Unless the order confirmation states otherwise, our prices are „ex works”, and exclude postage and packing. Postage and packing are charged separately.
2. The VAT is not included in our prices; it is billed separately at the statutory rate on the date of invoicing.
3. If six months pass between the conclusion of the contract and the agreed delivery date, or if the service for which the customer is liable can only be carried out after the expiry of the aforementioned period, prices valid at the time of delivery or provision shall apply. If the price increase exceeds the increase of the consumer price index, the buyer is entitled to withdraw from the contract.

Section 4 Delivery times

1. At the beginning of the specified delivery period, clarification of all technical questions is presupposed.
2. The agreement of delivery dates and deadlines must be expressed in writing.
3. If the buyer is in default of acceptance or violates other obligations to cooperate, we are entitled to claim the damage caused to us, including any additional expenses. In this case, the risk of accidental loss or the accidental deterioration of the goods is transferred to the buyer as of the date on which he falls into default of acceptance.

Section 5 Dispatch and transfer of risk

1. The risk is transferred to the buyer on dispatch, or when the buyer falls into default of acceptance.
2. Packaging is carried out pursuant to commercial practice. This will be invoiced at cost price and will not be revoked. The buyer is obliged to take care of the disposal of the packaging at his own expense.

GENERAL TERMS AND CONDITIONS OF BUSINESS

Section 6 Liability

1. We hereby exclude our liability for negligent breach of duty, on the condition that no contractual obligations, damages resulting from injury to life, limb or health or guarantees concerning, or claims under the Product Liability Act are affected. The same applies to breaches of duty by our legal representatives and agents.
2. If the contractor's operating or maintenance instructions are not followed, if the products are modified, if parts are replaced, or if consumables which do not comply with the original specifications are used, any warranty will lapse if the customer does not disprove a correspondingly substantiated assertion that the defect was only caused by one of these circumstances.
3. Liability for normal wear and tear is excluded.

Section 7 Limitation

1. Claims due to a defect in a used item will expire one year after the delivery of the item.
2. Claims not relating to a defect will expire after one year.
3. Notwithstanding Point1 and Point2, the statutory deadlines shall apply, if the liability is based on intent or an assumed warranty.

Section 8 Reservation of ownership

1. We retain ownership of the goods until all payments from the delivery have been received. In the event of breach of contract – especially late payment – we are entitled to take back the purchased goods. The withdrawal or seizure, by us, of goods delivered under reservation always constitutes a withdrawal from the contract. After withdrawing the goods, we are entitled to reutilise them. After the deduction of reasonable utilisation costs, the remaining utilisation proceeds are charged to the buyer as obligations.
2. The buyer is obliged to notify us immediately in writing of any attachments of the purchased items, and to inform the pledgee of the reservation of title. If the third party is unable to compensate us for the judicial and extrajudicial costs of an action pursuant to Section 771 ZPO, the customer is liable for the damages incurred.

Section 9 Payment

1. Unless otherwise agreed, our invoices are due and payable with 2 % cash discount within 8 days following the date of invoice, or within 30 days following the date of invoice without any discount.
2. We reserve the right to refuse cheques or bills of exchange. Cheques are only accepted as a conditional payment. Discount or bill charges shall be paid by the contracting party, and are due immediately.
3. If there is reasonable doubt about the creditworthiness of the customer, especially if he does not honour a check or if he suspends payment, we are entitled to make the entire balance due, even if we have accepted cheques. In addition, we shall be entitled to claim advance payments or collateral.
4. If the buyer stops payment definitively and/or triggers insolvency proceedings on his assets or judicial or extrajudicial composition proceedings, we are also entitled to withdraw from the unfulfilled part of the contract.
5. If the buyer defaults on payment, we are entitled to charge interest pursuant to the legal provisions. If we are able to provide evidence of further damages caused by delay, we are entitled to claim these.6.The buyer may only exercise offset rights if his counterclaims have been established as final, are undisputed, or are recognised by us. Moreover, he shall only be entitled to exercise a right of retention if his counterclaim is based on the same contractual relationship.

GENERAL TERMS AND CONDITIONS OF BUSINESS

Section 10 Data processing

We are entitled to store and process all data received on the buyer in connection with the business relationship in the interest of data protection.

Section 11 Severability clause

Should any provision of these terms and conditions of business be or become invalid, this will not affect the validity of any other terms and conditions and agreements between us and the buyer.

B) Special provisions against companies

The following additional provisions shall also apply in relation to companies:

Section 1 Warranty

1. Defects in the goods supplied, including the manuals and other documentation, must be amended by the supplier within the statutory period of two years following delivery, and after appropriate notification from the user. This happens following the selection, by the buyer, of a free repair or replacement. In the event of a replacement, the buyer is obliged to return the defective item.
2. If the defect can not be remedied within a reasonable period, or if the replacement is considered to have failed for other reasons, the buyer may opt either to request a discount of the purchase price (reduction), or to withdraw from the contract. A failure of the subsequent improvement must be assumed if the Supplier was granted sufficient opportunity to carry out a subsequent improvement or replacement delivery without the desired success being achieved, if the subsequent improvement or replacement delivery is rejected or unreasonably delayed by the Supplier, if reasonable doubts exist with regard to the prospects of success, or if unreasonableness exists for any other reason.

Section 2 Examination and notification obligation

In mutual commercial transactions, the warranty rights of the buyer are based on the assumption that his inspection and reproof obligations will be properly complied with pursuant to Sections 377, 378 HGB. The complaint must be made in writing.

Section 3 Liability

Liability for unforeseeable damage is excluded, unless deliberate breaches of duty, damages resulting from damage to life, limb or health, or guarantees or claims under the German Product Liability Act occur.

Section 4 Retention of title

Supplementary to the provisions of A) Section 8:

- a) We retain the ownership of the delivered goods, until satisfaction of all accounts receivable to which we are entitled from the buyer, for whatever reason.
- b) Notwithstanding A) Section 8, the redemption of purchased goods from dealers does not constitute a withdrawal from the contract, unless we have expressly confirmed this in writing. We shall have the right, irrespective of the claim to performance due to us on expiry of a period of time allowed to the customer for the performance of an obligation, to demand surrender of the item of delivery if the customer fails to fulfil his obligation towards us or to do so punctually and/or if the customer acts in an inadmissible manner on items delivered to him subject to reservation of title. If the buyer has fulfilled the contract, we must hand over the items.
- c) If the delivery was carried by the buyer on the behalf of a company, the items may be resold in the ordinary course of business. In this case, however, the buyer hereby assigns to us all claims amounting to the final invoice amount (including VAT) of our claim, which accrue from resale to his customers or third parties, irrespective of whether the goods have been re-sold without or after processing. For items which are resold on credit, the buyer will be required to retain ownership of the goods sold to his clients. The buyer hereby assigns the rights and claims relating to the retention of title against his clients to us.

GENERAL TERMS AND CONDITIONS OF BUSINESS

d) The buyer shall carry out any treatment or processing on our behalf, free of charge. The processing, combining, mixing or blending of the reserved items with other items not belonging to us results in co-ownership of the new item, in proportion with the value of the purchased item (final invoiced amount, incl. VAT) and the other processed goods at the time of processing, combining, mixing or blending. If the buyer acquires sole ownership of the new product, it is agreed that the buyer grants us proportionate co-ownership in the ratio of the value of the aforementioned bill, and stores the item for us free of charge. Should the reserved goods, together with other goods, and irrespective of whether they are resold without/after processing, combining, mixing or blending, the advance assignment as agreed in Paragraph 3(c) will only apply up to the factor value of the reserved items which have been resold with the other goods.

e) If reserved goods are incorporated as an essential component in the property of the buyer, this hereby transfers the rights arising from the sale of a property, or from claims arising from the property rights – along with all ancillary rights – to us.

f) We undertake to release the securities due to us at the request of the customer if the realisable value of our securities exceeds the secured claims by more than 10%. We are obliged to select the collateral to be released.

Section 5 Transfer of risk

1. Provided that the order confirmation states otherwise, “ex-works” delivery is agreed upon.
2. The risk passes to the buyer as soon as the shipment has been handed over to the person responsible for the transportation, or has left our site for the purpose of delivery. If the shipment is delayed or not carried out at the request of the customer, the risk and the notification of readiness for dispatch are transferred to him.
3. At the request of the customer, deliveries may be insured in his name and on his behalf.

Section 6 Applicable law, place of jurisdiction and fulfilment

1. For these terms and conditions of business and the entire legal relationship between us and the customer, the laws of the Federal Republic of Germany shall apply.
2. The place of jurisdiction is Kamen. However, we are also entitled to sue the buyer at his place of residence.
3. Provided that the order confirmation states otherwise, the place of fulfilment is our head office in Bergkamen.





VISIT US ONLINE

PROFESSIONAL INDUSTRIAL PRODUCTS

[CONTACT](#) | [TERMS AND CONDITIONS](#) | [LOGIN](#) | [REGISTER](#) |

[HOME](#) | [PRODUCTS](#) | [PRIVATE LABEL](#) | [CATALOGUE](#) | [JOBS](#) | [COMPANY PORTRAIT](#)

WEKEM offers a wide spectrum of technical sprays, adhesives and cleaning products to their customers.

Please select a product range from the left-hand side to go to the product overview.

www.wekem.de

News

HC 75 hand-cleaning cloths are designed for use in industry, trade, during assembly, for...

[Read more](#)

Your local stockist

WEKEM[®]
professionelle
INDUSTRIEPRODUKTE

WEKEM GmbH

Emilie-Winkelmann-Straße 2 · 59192 Bergkamen

Telefon: 0 23 89 - 40 30 10 · Fax: 0 23 89 - 40 30 111

E-Mail: vertrieb@wekem.de · www.wekem.de

